

EXCELL PRECISION PRODUCT CATALOG

Leading the Way in High-Tech
Scale-IoT[®] Innovation



ENTERPRISE PROFILE

EXCELL Precision, founded in 1979, is a global manufacturer and marketer of precision instrument for use in laboratory, industrial and retailing applications. EXCELL is a an innovative leader in the industry. With our innovative products and services, we are helping our customer across the entire globe to implement balances, weighing and scales solutions in a variety of industries and applications. We currently are exporting our solutions to over 150 countries.

EXCELL distinguishes itself from the competition by investing in its research and development, producing scales with high quality and reasonable pricing, and committing to customer satisfaction.

EXCELL Precision Balances are made for reliable and high-precision weighing both in the lab and under harsh industrial conditions. Our Controllers and Weighing Indicators provide you accurate results and fast material transfer in applications from basic filling to complex batching process. Our high-quality bench scales and portable scales, with efficient and reliable weighing, are used for any type of industrial application. Our Retail Solutions are perfectly placed for weighing, labeling, ticketing, packaging needs.



150⁺
COUNTRY SALES



45⁺ YEARS
INDUSTRY EXPERIENCE

Icons in this catalog represent different product features for easy identification.



Wi-Fi



Bluetooth



RS232



IP68



IP69



Lithium Ion
battery



Mechanical
switch keys



Wireless
Charging

MILESTONE 01

SNAPSHOTS IN TIME 03

LITHIUM POWERED SERIES 05

Weighing Scale	06
Weighing Indicator	07
Counting Scale / Indicator	08

IP68 IP69 WATERPROOF 09

Weighing Scale	10
Weighing Indicator	15

PRICE COMPUTING SCALE 19

Scale	20
Indicator	23
Bench Scale	24

WEIGHING SCALE 25

Scale	26
Indicator	35
Bench Scale	43

COUNTING SCALE 45

Scale	46
Indicator	48
Bench Scale	50

BATCH WEIGHING CONTROLLER 51

PLATFORM 55

INDUSTRIAL SCALE 58

Bluetooth Scale	61
POE Ethernet Scale	63

SCALE ACCESSORIES 64

MILESTONE



1995
Shanghai EXCELL
Established



1988
NTEP and OIML
Certified

1991
Entered
The China Market



1986
Factory Establishment



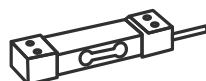
1981
Development of
Charging Technology



1979
Company Established

1980
First Mechanical
Scale Launched

1985
The First Load Cell
Digital Scale Launched



1989
The World's First
Bestselling
Rechargeable Scale

1997
Obtained The First
EU TYPE
Certification

2004

- RCBS First Generation Powder Dispenser
- The First Implementation of The ERP System



e-Accüra 2018

Acquire e-Accüra and
Co-market Globally



2025

- Marin IP68 & IP69
Waterproof Weighing Scale
- QUEEN & GALAXY
NTEP Certified



2013

IP68 Scale & Indicator

2016

Wireless Scale Series



2020

Lithium-powered Scale

Forging the future, continuing the legacy.

2005

- Obtained the European
NAWI Certification
- Obtained the First American
NTEP Certification



2017

The Leading Company in
China's Electronic Scale Industry



2024



Queen / Galaxy
IP68 & IP69 Certified

1999

New Headquarters
Established



2014



IP68 Wireless Charging
Waterproof Weighing Scale



2023



SUB Waterproof Weighing Scale
Innovative Moisture-Resistant
IP68 & IP69 Certified

1998



- The Nation's First High-Precision Balance "BH" Launched
- ISO 9001 Certified
- The First Batch Weighing Controller Launched

SNAPSHOTS IN TIME

WITNESSING EVERY STEP WE TAKE



This photo captures our team in the early days of EXCELL's journey. The dedication and hard work of everyone have built the EXCELL we see today. These smiles are our most valuable asset.

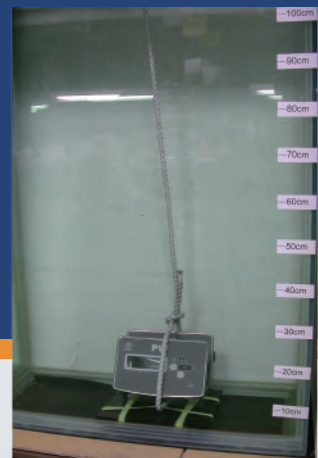
We believe in the power of unity, and these joyful moments are the driving force behind our journey forward.



Our scale business is substantial and production volume is growing rapidly year on year due to our product reliability, quality and competitive pricing. We manufacture products for a wide range of weighing applications including Retail, Industrial and Laboratory market sectors.



EXCELL PRECISION is one of the fastest growing manufacturers of high quality, precision digital electronic scales.



2004
Factory Production Line
Operation Status



LITHIUM POWERED SERIES



FEATURES

- Up to 1/15,000 display resolution. High Speed 24bits AD
- Auto zero tracking and pre-tare
- Simple counting ; Gross/Net indication ; Hold function
- Weight and quantity over-limit warning
- Built-in power saving function to extend usage time
- 5 brightness setting selectable for LCD backlight

AXW



Capacity	3 / 7.5 / 15 / 30 Kg
Division	0.2 / 0.5 / 1 / 2 g
Power	AC 100V ~ 240V (±10%) adapter + 18650 3.7V Lithium Ion battery
Display	LCD 6 digits ; 28 mm (Height) ; LED backlight
Platter Size	290 x 230mm (W x D)
Dimensions	297 x 106 x 345mm (W x H x D)
Operating Temperature	0°C ~ 40°C (32°F ~ 104°F)
Option	RS232 or Wi-Fi or Bluetooth

FXW



Capacity	3 / 3 / 6 / 7.5 / 12 / 15 / 30 / 30 Kg
Division	0.2 / 0.5 / 1 / 0.5 / 2 / 1 / 2 / 5 g
Power	AC 100V ~ 240V (±10%) adapter + 18650 3.7V Lithium Ion battery
Display	LCD 6 digits ; 28 mm (Height) ; LED backlight
Platter Size	300 x 225mm (W x D)
Dimensions	300 x 110 x 330mm (W x H x D)
Operating Temperature	0°C ~ 40°C (32°F ~ 104°F)
Option	RS232 or Wi-Fi

NXW



Capacity	3 / 7.5 / 15 / 30 Kg
Division	0.2 / 0.5 / 1 / 2 g
Power	AC 100V ~ 240V (±10%) adapter + 18650 3.7V Lithium Ion battery
Display	LCD 6 digits ; 28 mm (Height) ; LED backlight
Platter Size	290 x 230mm (W x D)
Dimensions	297 x 106 x 345mm (W x H x D)
Operating Temperature	-10°C ~ 40°C (14°F ~ 104°F)
Option	RS232 or Wi-Fi or Bluetooth

FEATURES

- Up to 1/15,000 display resolution. High Speed 24bits AD
- Auto zero tracking and pre-tare
- Simple counting; Gross/Net indication; Hold function
- Weight and quantity over-limit warning
- Built-in power saving function to extend usage time
- 5 brightness setting selectable for LCD backlight

SXW



Power	AC 100V ~ 240V (±10%) adapter + 18650 3.7V Lithium Ion battery
Display	LCD 6 digits ; 28 mm (Height) ; LED backlight
Dimensions	276 x 170 x 136mm (W x H x D)
Operating Temperature	0°C ~ 40°C (32°F ~ 104°F)
Option	RS232 or Wi-Fi or Bluetooth Relay card

TXW



Power	AC 100V ~ 240V (±10%) adapter + 18650 3.7V Lithium Ion battery
Display	LCD 6 digits ; 28 mm (Height) ; LED backlight
Dimensions	280 x 220 x 117mm (W x H x D)
Operating Temperature	0°C ~ 40°C (32°F ~ 104°F)
Option	RS232 or Wi-Fi or Bluetooth Relay card

FEATURES

- High speed 24bits AD; Display reading speed faster
- Faster weighing stability
- Faster zero return

AXC



- 1/3,000, 1/6,000 display resolution

Capacity	3 / 15 / 30 Kg
Division	0.2 / 1 / 2 g
Power	AC 100V ~ 240V (±10%) adapter + 18650 Lithium Ion battery
Display	LCD 6 / 6 / 6 digits ; 14mm (Height) LED backlight
Dimensions	275 x 105 x 310mm (W x H x D)
Operating Temperature	0°C ~ 40°C (32°F ~ 104°F)
Option	RS232 or Wi-Fi or Bluetooth

FXC



- Up to 1/15,000 display resolution
- Low power and charging status indication

Capacity	3 / 6 / 7.5 / 15 / 30 Kg
Division	0.2 / 1 / 0.5 / 1 / 2 g
Power	AC 100V ~ 240V (±10%) adapter + 18650 Lithium Ion battery
Display	LCD 6 / 6 / 6 digits ; 18mm (Height) LED backlight
Dimensions	300 × 110 × 330mm (W x H x D)
Operating Temperature	0°C ~ 40°C (32°F ~ 104°F)
Option	RS232 or Wi-Fi

SXC



- Enclosed with indicator dust cover, rechargeable battery and power cord
- Easy to set any specification and up to 1/15,000 display resolution
- 15 levels sampling speed available
- Weight and quantity accumulation available
- Tare and pre-tare functions

Power	AC 100V ~ 240V (±10%) adapter + 18650 Lithium Ion battery
Display	LCD 6 / 6 / 6 digits ; 14mm (Height) LED backlight
Dimensions	256 x 170 x 90mm (W x H x D)
Operating Temperature	0°C ~ 40°C (32°F ~ 104°F)
Option	RS232 or Wi-Fi or Bluetooth

TXC



- Up to 1/15,000 display resolution
- High speed 24bits AD; Display reading speed faster
- Auto calibration function
- Weight and quantity over-limit warning
- Low power and charging status indication

Power	AC 100V ~ 240V (±10%) adapter + 18650 Lithium Ion battery
Display	LCD 6 / 6 / 6 digits ; 14mm (Height) LED backlight
Dimensions	280 x 220 x 117mm (W x H x D)
Operating Temperature	0°C ~ 40°C (32°F ~ 104°F)
Option	RS232 or Wi-Fi or Bluetooth

IP68 IP69 WATERPROOF



FEATURES

- High-Quality Food-Grade Stainless Steel 304 Material, the Top Choice for Agricultural, Livestock, and Seafood Processing
- Futuristic Streamlined Design, Lightweight and Portable. Integrated Bottom Design for Easy Cleaning
- Powered by Lithium Battery 18650, Aligning with Environmental and Social Trends
- Exclusive Energy-Saving Patent, Maximizing Performance with Single-cell Lithium 18650 Type
- Exclusive Power Protection Device, Eliminating Concerns of Overcharging & Overdischarging Risks
- Plastic Materials with UL 94 VO Flammability Rating Standard Ensuring User Safety
- Waterproof mechanical switch keys

SUB

IP68 / IP69 Waterproof



304 Stainless



Capacity	3 / 3 / 6 / 6 / 15 / 15 Kg
Division	0.5 / 1 / 1 / 2 / 2 / 5 g
Power	AC 100V ~ 240V (±10%) 3.7V 3200mA (18650 Lithium Ion battery)
Display	SUB : LCD 6 digits ; 25mm (Height) SUBe : LED 6 digits ; 21mm (Height)
Platter Size	195 x 170mm (W x D)
Dimensions	196 x 100 x 275 mm (W x H x D)
Operating Temperature	0°C ~ 40°C (32°F ~ 104°F)
Option	Platter 235 x 200 (W x D)

SUB Aircharge

IP68 / IP69 Waterproof



304 Stainless



- Wireless charging safer and longer life than DC Jack

Capacity	3 / 3 / 6 / 6 / 15 / 15 Kg
Division	0.5 / 1 / 1 / 2 / 2 / 5 g
Power	12V / 1.5A (15W) output QI TX module + 3.7V 3200mA (18650 Lithium Ion battery)
Display	SUB : LCD 6 digits ; 25mm (Height) SUBe : LED 6 digits ; 21mm (Height)
Platter Size	195 x 170mm (W x D)
Dimensions	196 x 100 x 275 mm (W x H x D)
Operating Temperature	0°C ~ 40°C (32°F ~ 104°F)
Option	Platter 235 x 200 (W x D)

FEATURES

Advanced ARM-Based 32-Bit MCU with Precision 24-Bit ADC

Designed for low-power applications, this microcontroller unit (MCU) and a high-precision 24-bit analog-to-digital converter (ADC), ensuring efficient, responsive, and accurate performance tailored for demanding weighing environments.

IP68 & IP69 Dust & Waterproof Testing

Rigorously tested to meet IP68 and IP69 standards, the Marin series delivers exceptional dust and water protection, making it ideal for demanding environments such as agriculture and seafood processing.

Advanced Smart Power Management System (Patented)

Dynamically adjusts power consumption based on user habits, enhancing energy efficiency while maintaining a smooth and uninterrupted user experience.

Multiple Power Options

Marin offers versatility with three battery types— lithium, dry cell, and lead-acid. The dry battery model can also include of an AC adapter for plugged-in use.

21700 Lithium-Ion Battery Pack

AirCharge utilizes high-cycle 21700 lithium-ion batteries from world-renowned manufacturers, offering extended lifespan, enhanced reliability, and peace of mind for users.

Specially Designed Power Circuit

Features overcharge, over-discharge, and auto shut-off protection mechanisms, improving battery longevity and ensuring overall system reliability.

Seamless Data Transfer

Marin solves transmission issues in waterproof scales with stable Wi-Fi or Bluetooth wireless data transfer.

Ergonomic and Durable Design

Marin features an ABS housing and a food-grade stainless steel 304 weighing pan, ensuring durability and ease of handling with side-grooved handles. Additionally, its mechanical keypad design offers enhanced durability and excellent water resistance, making it highly reliable even in humid conditions.

Superior Electromagnetic and Electrostatic Interference Resistance

Engineered to resist electromagnetic and electrostatic disturbances, ensuring consistent and stable performance.

Clear and Adjustable Display Brightness

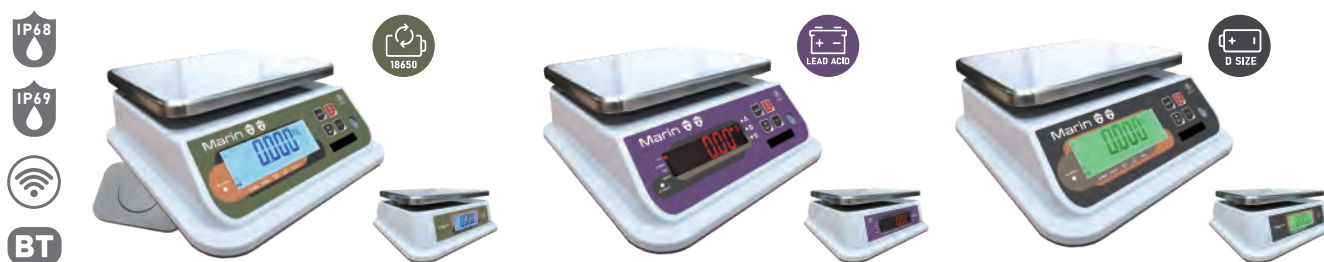
It includes multi-stage backlight or LED light brightness adjustment, offering four selectable brightness levels to ensure clear visibility under any lighting conditions.

Dual Display Options

Marin features front and rear display for both LCD and LED.

Marin LCD / Marin LED

IP68 / IP69 Waterproof



Capacity	3 / 3 / 6 / 6 / 15 / 15 / 30 / 30 kg		
Division	0.5 / 1 / 1 / 2 / 2 / 5 / 5 / 10 g		
Battery	Li-ion rechargeable battery pack DC 3.7V 5300mA (21700)	Lead-acid rechargeable battery DC6V / 4Ah	D size batteries (not included) 4 x 1.5V Alkaline batteries or 4 x 1.2V NiCd/NiMH batteries (remove batteries to charge)
Power	AC 100V ~ 240V (±10%) adapter + 12V / 1.5A (15W) output Qi TX module	AC 100V ~ 240V (±10%) adapter with 12V / 1A output	
Display	Marin : 6 digits/ 25mm (height) White LED backlight Marin LED : 6 digits/ 21mm (height) Red LED display		6 digits/ 25mm (height) Green LED backlight
Platter Size	235 x 200mm (W x D)		
Dimensions	270 x 124 x 310mm (W x H x D)		
Operating Temperature	0°C ~ 40°C (32°F ~ 104°F)		
Option	<ul style="list-style-type: none"> Bluetooth or Wi-Fi Rear display : Marin 21mm (height) Marin LED: 21mm (height) 		

FEATURES

- Advanced ARM-Based 32-Bit MCU with Precision 24-Bit ADC
- IP68 Dust & Waterproof Certification
- Advanced Smart Power Management System(Patented)
- Multiple Power Options
- Standard 18650 Lithium-Ion Battery
- Specially Designed Power Circuit
- Ergonomic and Durable Design
- Superior Electromagnetic and Electrostatic Interference Resistance
- Clear and Adjustable Display
- High Precision and Fast Sampling

NEO ELW / NEO ESW / NEO ESW-E

IP68 Waterproof



NEO ELW
AirCharge



NEO ELW



NEO ELW
(Dry Battery)



NEO ESW
AirCharge

NEO ESW-E
AirCharge

NEO ESW

NEO ESW-E

NEO ESW
(Dry Battery)



Capacity

3 / 3 / 6 / 6 / 15 / 15 / 30 / 30 kg

Division

0.5 / 1 / 1 / 2 / 2 / 5 / 5 / 10 g

Battery

Li-ion rechargeable battery pack
DC 3.7V 6100mA (18650-2P)

Lead-acid rechargeable battery
DC6V / 4Ah

D size batteries (not included)
4 x 1.5V Alkaline batteries or
4 x 1.2V NiCd/NiMH batteries
(remove batteries to charge)

Power

AC 100V ~ 240V (±10%) adapter +
12V / 1.5A (15W) output
QI TX module

AC 100V ~ 240V (±10%) adapter with
12V / 1A output

Display

NEO ELW / ESW LCD : 6 digits/ 25mm (height) White LED backlight
NEO ESW-E LED : 6 digits/ 21mm (height) Red LED display

6 digits/ 25mm (height)
Green LED backlight

Platter Size

235 x 200mm (W x D)

Dimensions
(W x H x D)

NEO ELW : 270 x 124 x 310mm
NEO ESW : 240 x 120 x 280mm

Operating Temperature

0°C ~ 40°C (32°F ~ 104°F)

FEATURES

- IP68 certified by SGS
- EU-TYPE EXAMINATION CERTIFICATE : Number T10896
- 1/3,000 to 1/6,000 display resolution available
- Sealed waterproof silica gel strip blocks water from infiltrating into the scale

- Stainless steel made for anti-rust
- Concave handle for easy carrying

▪ Approval Model :

1/3,000 display resolution, single range or multi-range

ELW Plus / ESW Plus



ELW Plus
ABS Plastic

ESW Plus
304 Stainless

Capacity	3 / 6 / 15 / 30 Kg
Division	0.5 / 1 / 5 / 5 g
Power	AC 100V ~ 240V (±10%) adapter + DC 6V / 4Ah rechargeable battery
Display	6 digits ; 25mm (Height) White LED backlight (LCD Display)
Platter Size	235 x 200mm (W x D)
Dimensions (W x H x D)	ELW⁺ : 270 x 124 x 310mm ESW⁺ : 240 x 120 x 280mm
Operating Temperature	-10°C ~ 40°C (14°F ~ 104°F) (Approval)

ELW-E Plus / ESW-E Plus



ELW Plus
ABS Plastic

ESW Plus
304 Stainless

Capacity	3 / 6 / 15 / 30 Kg
Division	0.5 / 1 / 5 / 5 g
Power	AC 100V ~ 240V (±10%) adapter + DC 6V / 4Ah rechargeable battery
Display	6 digits ; 15mm (Height) LED Display
Platter Size	235 x 200mm (W x D)
Dimensions (W x H x D)	ELW-E⁺ : 270 x 124 x 310mm ESW-E⁺ : 240 x 120 x 280mm
Operating Temperature	-10°C ~ 40°C (14°F ~ 104°F) (Approval)

ELW Plus / ESW Plus AirCharge



ELW Plus
ABS Plastic

ESW Plus
304 Stainless

Capacity	3 / 6 / 15 / 30 Kg
Division	0.5 / 1 / 5 / 5 g
Power	12V / 1.5A (15W) output Qi TX module + 3.7V 6100mA (18650 dual battery)
Display	6 digits ; 25mm (Height) White LED backlight (LCD Display)
Platter Size	235 x 200mm (W x D)
Dimensions (W x H x D)	ELW⁺ : 270 x 124 x 310mm ESW⁺ : 240 x 120 x 280mm
Operating Temperature	-10°C ~ 40°C (14°F ~ 104°F) (Approval)

ELW-E Plus / ESW-E Plus AirCharge



ELW Plus
ABS Plastic

ESW Plus
304 Stainless

Capacity	3 / 6 / 15 / 30 Kg
Division	0.5 / 1 / 5 / 5 g
Power	12V / 1.5A (15W) output Qi TX module + 3.7V 6100mA (18650 dual battery)
Display	6 digits ; 15mm (Height) LED Display
Platter Size	235 x 200mm (W x D)
Dimensions (W x H x D)	ELW-E⁺ : 270 x 124 x 310mm ESW-E⁺ : 240 x 120 x 280mm
Operating Temperature	-10°C ~ 40°C (14°F ~ 104°F) (Approval)

FEATURES

- IP68 certified by SGS
- EU-TYPE EXAMINATION CERTIFICATE : Number T10896
- 1/3,000 to 1/6,000 display resolution available
- Battery-powered and energy-efficient with up to 500 hours of operation
- Sealed waterproof silica gel strip blocks water from infiltrating into the scale
- Concave handle for easy carrying
- **Approval Model :**
1/3,000 display resolution, single range or multi-range

ELW / ESW Dry

Dry Battery-powered



ELW Plus
ABS Plastic

ESW Plus
304 Stainless



Capacity	3 / 6 / 15 / 30 Kg
Division	0.5 / 1 / 5 / 5 g
Power	4 x D size dry batteries (alkaline) (not included)
Display	6 digits ; 25mm (Height) Green LED backlight (LCD Display)
Platter Size	235 x 200mm (W x D)
Dimensions (W x H x D)	ELW Dry : 270 x 124 x 310mm ESW Dry : 240 x 120 x 280mm
Operating Temperature	-10°C ~ 40°C (14°F ~ 104°F) (Approval)

FEATURES

- SGS Certified Dual IP68 & IP69 Protection Levels
- High-Performance Industrial Control Chip
- SUS 304 Stainless Steel Housing Meet Hygiene Requirements
- Large 55mm LCD Display
- Multi-Functional Indicators: Pre-tare, Gross/Net, Low Power, HOLD, Accumulation
- Multi-Color LED Backlight
- Easy Counting Function
- Various Option cards with Dual independent UARTs ; Support MODBUS RTU, MODBUS TCP
- Complies with Latest European Safety Standards
- Waterproof Vent
- Galaxy ABS Plastic Version
- Optional Stainless Steel SS Platform

Queen

IP68 / IP69 Waterproof



304 Stainless



Power	AC 100V ~ 240V (±10%) DC 6V/4Ah rechargeable lead-acid battery
Display	LCD 6 digits ; 55mm (Height) ; Multi-color LED
Dimensions	232 x 150 x 80 mm (W x H x D)
Operating Temperature	-10°C ~ 40°C (14°F ~ 104°F) (Approval)
Option	1.RS232 Cable 2.Relay card or RS-232/485 card or B/T 4.0 card or Wi-Fi card or RJ45 ethernet card or USB card for data log 3.Foot switch

Galaxy

IP68 / IP69 Waterproof



ABS Plastic



Power	AC 100V ~ 240V (±10%) DC 6V/4Ah rechargeable lead-acid battery
Display	LCD 6 digits ; 55mm (Height) ; Multi-color LED
Dimensions	232 x 150 x 80 mm (W x H x D)
Operating Temperature	-10°C ~ 40°C (14°F ~ 104°F) (Approval)
Option	1.RS232 Cable 2.Relay card or RS-232/485 card or B/T 4.0 card or Wi-Fi card or RJ45 ethernet card or USB card for data log 3.Foot switch 4.U shape stand

FEATURES

- IP68 waterproof check-weighing indicator with 304 stainless steel housing with built in RS232
- Two adjustable weighing speed : moderate and slow
- Selectable weighing units : Kilogram(kg), gram(g), pound(lb), and ounce(oz)

PH3



- Up to 1/30,000 display resolution
- Analog High/Low/Ok indication
- 20 keys with number keys

Power	AC 100V ~ 240V (±10%) 12V / 1A adaptor
Display	LCD 6 digits ; 25 mm (Height); LED backlight
Dimensions	256 x 170 x 90mm(W x H x D)
Operating Temperature	-10°C ~ 40°C (14°F ~ 104°F) (Approval)
Option	RS232 cable Relay card

PWH3



- Up to 1/15,000 display resolution
- Hold function, Check mode High / Low / OK, Auto average unit weight, Animal scale function

Power	AC 100V ~ 240V (±10%) 12V / 1A adaptor
Display	LCD 6 digits ; 25 mm (Height); LED backlight
Dimensions	256 x 170 x 90mm(W x H x D)
Operating Temperature	-10°C ~ 40°C (14°F ~ 104°F) (Approval)
Option	RS232 cable

P120-S



- IP68 : mist-proof, waterproof and dustproof
- Stand alone batching mode or connect to PLC for external system control
- High performance A/D : 0.12 μ VD input sensitivity, 120(max.) times/sec conversion rate

Power	AC 100V ~ 240V (±10%)
Display	LCD 6 digits ; 16 mm (Height); LED backlight
Dimensions	256 x 170 x 90mm(W x H x D)
Operating Temperature	0°C ~ 40°C (32°F ~ 104°F)

GTW / GTW+RJ45



- IP68 : mist-proof, waterproof and dustproof, ABS housing with built-in RS232 terminal
- Up to 1/30,000 display resolution
- High Speed 24bits AD ; Display reading speed faster
- Faster weighing stability
- Zero key and Tare key react faster
- Preset weight or quantity ; Weight accumulation
- Simple counting; Gross/Net indication ; Hold function ; Check mode High / Low / OK
- **GTW+RJ45** : RJ-45 data-transfer interface

Power	AC 110V / 230V (±10%) + DC 6V/ 4Ah rechargeable battery
Display	LCD 6 digits ; 28 mm (Height); LED backlight
Dimensions	238 x 156 x 90mm(W x H x D)
Operating Temperature	0°C ~ 40°C (32°F ~ 104°F)
Option	RS232 cable U shape stand Relay card or Wi-Fi or Bluetooth or RJ45

GW / QW



GW ABS Plastic

QW 304 Stainless

- IP68 : mist-proof, waterproof and dustproof built in RS232
- Up to 1/15,000 display resolution
- Hold function, Check mode High / Low / OK, Auto average unit weight, Animal scale function
- Low power indication and auto power off
- Full range tare, Pre-tare, Auto zero tracking, Sampling counting, Gross/ Net Indication

Power	AC 110V / 230V (±10%) DC 6V / 4Ah rechargeable battery
Display	LCD 6 digits ; 55 mm (Height) ; LED backlight
Dimensions (W x H x D)	GW : 238 x 156 x 90mm QW : 232 x 150 x 80mm
Operating Temperature	0°C ~ 40°C (32°F ~ 104°F) Approval Model : -10°C ~ 40°C (14°F ~ 104°F)
Option	RS232 cable Relay card or Wi-Fi or Bluetooth Foot switch U shape stand for GW

GWS / QWS



GWS ABS Plastic

QWS 304 Stainless

- IP68 : mist-proof, waterproof and dustproof built in RS232
- Extra-large and wide LCD display 55mm height, with COOL WHITE LED backlight
- Quick access to hold function, weight check High / Low / OK
- Selectable tare range or up to full range tare; Pre-tare

Power	AC 110V / 230V (±10%) + DC 6V / 4Ah rechargeable battery
Display	LCD 6 digits ; 55 mm (Height); Cool White LED backlight
Dimensions (W x H x D)	GWS : 238 x 156 x 90mm QWS : 232 x 150 x 80mm
Operating Temperature	0°C ~ 40°C (32°F ~ 104°F) Approval Model : -10°C ~ 40°C (14°F ~ 104°F)
Option	RS232 cable Relay card or Wi-Fi or Bluetooth Foot switch U shape stand for GWS

GoW / QoW

Wireless Bluetooth



GoW ABS Plastic

QoW 304 Stainless

- Built-in Bluetooth need to work with wireless platform P.39
- IP68 : mist-proof, waterproof and dustproof built in RS232
- Extra-large and wide LCD display 6 digits with 55mm height
- Low power indication and auto power off
- Hold function, Check mode High / Low / OK, Auto average

Power	AC 110V / 230V (±10%) + DC 6V / 4Ah rechargeable battery
Display	LCD 6 digits ; 55 mm (Height); Cool White LED backlight
Dimensions (W x H x D)	GoW : 238 x 156 x 90mm QoW : 232 x 150 x 80mm
Operating Temperature	0°C ~ 40°C (32°F ~ 104°F) Approval Model : -10°C ~ 40°C (14°F ~ 104°F)
Option	RS232 cable Relay card or Wi-Fi or Bluetooth Foot switch U shape stand for GoW

		Anchor	Marin	SUB	NEO ESW	NEO ELW	ESW Plus	ELW Plus
Upper Housing	304 Stainless	●		●	●		●	
	ABS Plastic		●			●		●
	MAX Capacity (kg)	30	30	15	30	30	30	30
	Platter Size (mm)	235 x 200	235 x 200	Standard 195 x 170 Option 235 x 200	235 x 200	235 x 200	235 x 200	235 x 200
Display	LED, Font height (mm)	21	21	21	21	21	15 OIML	15 OIML
	LCD, Font height (mm)	25	25	25	25	25	25 OIML/NTEP	25 OIML/NTEP
	Dual LED, Font height (mm)	21	21				15 OIML	15 OIML
	Dual LCD, Font height (mm)	Front 25 Rear 21	Front 25 Rear 21					
Key	Mechanical keys	4	4	4				
	Membrane				5	5	5	5
Battery	Lead-acid	6V/4Ah	6V/4Ah		6V/4Ah	6V/4Ah	6V/4Ah OIML/NTEP	6V/4Ah OIML/NTEP
	Lithium			3.7V 3200mAh				
	Lithium (Wireless Charging)	3.7V 5300mAh ¹	3.7V 5300mAh ¹	3.7V 3200mAh	3.7V 6100mAh ¹	3.7V 6100mAh ¹	3.7V 6100mAh ¹ OIML/NTEP	3.7V 6100mAh ¹ OIML/NTEP
	1.5V Dry	4 x D size ²	4 x D size ²		4 x D size ²	4 x D size ²	4 x D size ² OIML	4 x D size ² OIML
	1.2V NiCd/NiMH	4 x D size ²	4 x D size ²		4 x D size ²	4 x D size ²		
Certification	IP68	●	●	●	●	●	●	●
	IP69	●	●	●				
Option	BT or	●	●					
	Wi-Fi	●	●					

OIML : european type approve and OIML approve

OIML/NTEP : european type approve and OIML approve and NTEP approve

¹ Patented power management system for lithium battery² Dry and NiCd/NiMH models use green backlight, Others use white backlight

PRICE COMPUTING SCALE



FEATURES

▪ Non-approval Model :

1/3,000 up to 1/6,000 display resolution, weighing modes. Up to 99 data accumulation and 25 data recall.

AM3 / AM4



- 1/3,000 display resolution (Multi-range available)
- Low power and charging status indication
- Faster weighing stability
- Faster zero return Zero key and Tare react faster Digital calibration

Capacity	3 / 6 / 15 / 30 Kg
Division	1 / 2 / 5 / 10 g
Power	AM3 : AC 110V / 230V (±10%) DC 6V / 4Ah rechargeable battery AM4 : AC 100V ~ 240V (±10%) DC 6V / 4Ah rechargeable battery
Display	LCD 6 / 6 / 6 ; 14mm (Height)
Platter Size	280 x 230mm (W x D)
Dimensions	275 x 105 x 310mm (W x H x D)
Operating Temperature	-10°C ~ 40°C (14°F ~ 104°F) (Approval)
Option	RS232

GRP3-35



- 35 direct PLU keys
- High Speed 24bits AD
- Faster display Reading Speed
- Faster weighing stability and zero return
- Double displays on tower

Capacity	6 / 15 / 30 Kg
Division	2 / 5 / 10 g
Power	AC 110V / 230V (±10%) DC 6V / 4Ah rechargeable battery
Display	LCD 6 / 6 / 6 ; 14mm (Height)
Platter Size	318 x 255mm (W x D)
Dimensions	315 x 535 x 353mm (W x H x D)
Operating Temperature	-10°C ~ 40°C (14°F ~ 104°F) (Approval)
Option	RS232

▪ Approval Model :

1/3,000 display resolution, single range or multi-range.

FD3-P / FDP3-P / FD4-P / FDP4-P



- Vendor side display at front and customer side display
- One display on tower or double displays on tower

Capacity	3 / 6 / 15 / 30 Kg
Division	1 / 2 / 5 / 10 g
Power	FD3-P/FDP3-P : AC 110V / 230V (±10%) DC 6V / 4Ah rechargeable battery FD4-P/FDP4-P : AC 100V ~ 240V (±10%) DC 6V / 4Ah rechargeable battery
Display	LCD 6 / 6 / 6 ; 18mm (Height)
Platter Size	300 x 225mm (W x D)
Dimensions (W x H x D)	FD3-P/FD4-P : 300 x 110 x 330mm FDP3-P/FDP4-P : 300 x 530 x 330mm
Operating Temperature	-10°C ~ 40°C (14°F ~ 104°F) (Approval)
Option	RS232

GR3 / GRP3



- LCD display with LED backlight vendor and customer display sides
- Vendor display side and display on tower
- Auto backlight off
- Easily adjustable feet to reach level on tower

Capacity	3 / 6 / 15 / 30 Kg
Division	1 / 2 / 5 / 10 g
Power	AC 110V / 230V (±10%) DC 6V / 4Ah rechargeable battery
Display	LCD 6 / 6 / 6 ; 14mm (Height)
Platter Size	318 x 255mm (W x D)
Dimensions (W x H x D)	GR3 : 315 x 115 x 353mm GRP3 : 315 x 535 x 353mm
Operating Temperature	-10°C ~ 40°C (14°F ~ 104°F) (Approval)
Option	RS232

FEATURES

▪ Non-approval Model :

1/3,000 up to 1/6,000 display resolution, weighing modes. Up to 99 data accumulation and 25 data recall.

▪ Approval Model :

1/3,000 display resolution, single range or multi-range.

GE3 / GEP3 / GE4 / GEP4



- LCD displays with LED backlight
- High speed 24bits AD; Display reading speed faster
- Faster weighing stability
- Faster zero return
- Zero key and Tare key react faster

Capacity	3 / 6 / 15 / 30 Kg
Division	1 / 2 / 5 / 10 g
Power	GE3/GEP3 : AC 110V / 230V (±10%) DC 6V / 4Ah rechargeable battery GE4/GEP4 : AC 100V ~ 240V (±10%) DC 6V / 4Ah rechargeable battery
Display	LCD 6 / 6 / 6 ; 14mm (Height)
Platter Size	318 x 255mm (W x D)
Dimensions (W x H x D)	GE3/GE4 : 315 x 115 x 353mm GEP3/GEP4 : 315 x 535 x 353mm
Operating Temperature	-10°C ~ 40°C (14°F ~ 104°F) (Approval)
Option	RS232

FEATURES

- Bright LCD displays with LED backlight
- Enclosed with adjustable feet, bubble level, dust cover, rechargeable battery and power cord

- Tare function
- Low battery and charging status indications
- Overload protection design

FD3-P-6PS / FD4-P-6PS



- 6 direct preset memory keys
- Special power switch design to prevent moisture getting inside the scale

Capacity	3 / 6 / 15 / 30 Kg
Division	1 / 2 / 5 / 10 g
Power	FD3-P-6PS : AC 110V / 230V (±10%) DC 6V / 4Ah rechargeable battery FD4-P-6PS : AC 100V ~ 240V (±10%) DC 6V / 4Ah rechargeable battery
Display	LCD 5 / 5 / 6 ; 18mm (Height)
Platter Size	300 x 225mm (W x D)
Dimensions	345 x 106 x 297mm (W x H x D)
Operating Temperature	-10°C ~ 40°C (14°F ~ 104°F) (Approval)
Option	RS232

SA3-P / SAP3 / PA2



Capacity	3 / 6 / 15 / 30 Kg
Division	1 / 2 / 5 / 10 g
Power	AC 110V / 230V (±10%) DC 6V / 4Ah rechargeable battery
Display	LCD 5 / 5 / 6 ; 18mm (Height)
Platter Size	290 x 220mm (W x D)
Dimensions	345 x 106 x 297mm (W x H x D)
Operating Temperature	-10°C ~ 40°C (14°F ~ 104°F) (Approval)
Option	RS232

FEATURES

- 35 direct preset memory keys
- Up to 99 data accumulation and 99 data recall
- High speed 24bits AD; Display reading speed faster
- 1/3,000 display resolution
- 1/6,000 display resolution (multi-range)
- IP degree wash down design IP Grade IPX6

JBLP3-35



Capacity	6 / 15 / 30 / 60 Kg
Division	2 / 5 / 10 / 20 g
Power	AC 110V / 230V (±10%) DC 6V / 4Ah rechargeable battery
Display	LCD 6 / 6 / 6 ; 14mm (Height)
Platter Size	334 x 254mm (W x D)
Dimensions	334 x 535 x 353mm (W x H x D)
Operating Temperature	-10°C ~ 40°C (14°F ~ 104°F) (Approval)
Option	RS232

TBLP3-35



Capacity	6 / 15 / 30 / 60 Kg
Division	2 / 5 / 10 / 20 g
Power	AC 110V / 230V (±10%) DC 6V / 4Ah rechargeable battery
Display	LCD 5 / 5 / 6 ; 14mm (Height)
Platter Size	400 x 300mm (W x D)
Dimensions	400 x 510 x 399mm (W x H x D)
Operating Temperature	-10°C ~ 40°C (14°F ~ 104°F) (Approval)
Option	RS232

FB510



- 1/3,000 display resolution available
- 9 preset unit price
- Built-in mini printer (date and time available)

Ribbon Cassette : Approx. 7 x 103 lines
(25°C continuous printing)

Print Speed : 1.0 lps \pm 20% [lps : lins per second]

Printer Head Reliability : MCBF 10x105 lines

Power AC 110V / 220V ($\pm 10\%$)
DC 6V / 4Ah rechargeable battery

Display LCD 6 / 5 / 6 ; 25mm (Height)

Dimensions (W x H x D) 276 x 172 x 153mm (L x W x H)
276 x 202 x 153mm (L x W x H)
(Including double-sided display)

Operating Temperature -10°C ~ 40°C (14°F ~ 104°F)
(Approval)

Options Double-sided display
Mounting bracket
RS-232

AP3 / AP4



- High speed 24bits AD ; Display reading speed faster
- Faster weighing stability
- Faster zero return

Non-approval Model :

1/3,000 up to 1/6,000 display resolution, weighing modes
Up to 99 data accumulation and 25 data recall

Approval Model :

1/3,000 display resolution, single range or multi-range

Power **AP3 :** AC 110V / 230V ($\pm 10\%$)
DC 6V / 4Ah rechargeable battery
AP4 : AC100V ~ 240V ($\pm 10\%$)
DC 6V / 4Ah rechargeable battery

Display LCD 6 / 6 / 6 ; 14mm (Height)

Dimensions 280 x 220 x 117mm (W x H x D)

Operating Temperature -10°C ~ 40°C (14°F ~ 104°F)
(Approval)

Options Second display
RS232 for PC or serial printer output

SB3-P / PQ2



- Enclosed with indicator dust cover, rechargeable battery and power cord
- Tare function
- Money return calculation of a trade balance
- Up to 99 data accumulation and 25 recalls
- Low battery and charging status indications
- OIML approval model available with 1/3,000 display resolution

Power AC 110V / 230V ($\pm 10\%$)
DC 6V / 4Ah rechargeable battery

Display LCD 6 / 6 / 6 ; 14mm (Height)

Dimensions 176 x 156 x 164mm (W x H x D)

Operating Temperature -10°C ~ 40°C (14°F ~ 104°F)
(Approval)

Options RS232 for PC or serial printer output

FEATURES

- High speed 24bits AD; Display reading speed faster
- Up to 99 data accumulation and 25 data recall
- Zero key and Tare key react faster
- Mini printer built-in for KFB510
- OIML approved models available for 1/3,000 display resolution

KFB510 / JFB510



Capacity	6 / 15 / 30 / 60 Kg
Division	2 / 5 / 10 / 20 g
Power	AC 110V / 230V (±10%) DC 6V / 4Ah rechargeable battery
Display	LCD 6 / 5 / 6 ; 25mm (Height)
Platter Size	KFB510 : 322 x 242mm (IPX6) JFB510 : 334 x 254mm (IPX5)
Operating Temperature	-10°C ~ 40°C (14°F ~ 104°F) (Approval)

KAP3 / JAP3 / KAP4 / JAP4



Capacity	6 / 15 / 30 / 60 Kg
Division	2 / 5 / 10 / 20 g
Power	AP3 : AC 110V / 230V (±10%) DC 6V / 4Ah rechargeable battery AP4 : AC 100V ~ 240V (±10%) DC 6V / 4Ah rechargeable battery
Display	LCD 6 / 6 / 6 ; 25mm (Height)
Platter Size	KAP3 : 322 x 242mm (IPX6) JAP4 : 334 x 254mm (IPX5)
Operating Temperature	-10°C ~ 40°C (14°F ~ 104°F) (Approval)
Option	Second Display / RS232

TAP3 / DAP3 / LAP3 / PAP3 / TAP4 / DAP4 / LAP4 / PAP4



Non-approval Model :

1/3,000 up to 1/6,000 display resolution, weighing modes. Up to 99 data accumulation and 25 data recall.

Approval Model :

1/3,000 display resolution, single range or multi-range.



Capacity	30kg *10g (TAP3) 60kg *20g (TAP3 / PAP3 / DAP3 / LAP3) 120kg*50g (TAP3 / PAP3 / DAP3 / LAP3) 150kg*50g (TAP3 / PAP3 / DAP3 / LAP3) 300kg*100g (PAP3 / DAP3 / LAP3) 600kg*200g (LAP3)
Power	TAP3 / DAP3 / LAP3 / PAP3 : AC 110V / 230V (±10%) DC 6V / 4Ah rechargeable battery TAP4 / DAP4 / LAP4 / PAP4 : AC 100 ~ 240V (±10%) or DC 6V / 4Ah rechargeable battery
Display	LCD 6 / 6 / 6 ; 14 mm (Height)
Operating Temperature	-10°C ~ 40°C (14°F ~ 104°F) (Approval)
Option	Second Display / RS232

Platter Size	TAP3: 300 x 400mm	LAP3: 460 x 600mm
	DAP3: 420 x 520mm	PAP3: 420 x 520mm

WEIGHING SCALE

FEATURES

- High-Quality Food-Grade Stainless Steel 304 Material, the Top Choice for Agricultural, Livestock, and Seafood Processing
- Futuristic Streamlined Design, Lightweight and Portable. Integrated Bottom Design for Easy Cleaning
- Powered by Lithium Battery 18650, Aligning with Environmental and Social Trends
- Exclusive Energy-Saving Patent, Maximizing Performance with Single-cell Lithium 18650 Type
- Exclusive Power Protection Device, Eliminating Concerns of Overcharging & Overdischarging Risks
- Plastic Materials with UL 94 VO Flammability Rating Standard Ensuring User Safety
- Waterproof mechanical switch keys

SUB

IP68 / IP69 Waterproof



304 Stainless



Capacity	3 / 3 / 6 / 6 / 15 / 15 Kg
Division	0.5 / 1 / 1 / 2 / 2 / 5 g
Power	AC 100V ~ 240V (±10%) 3.7V 3200mA (18650 Lithium Ion battery)
Display	SUB : LCD 6 digits ; 25mm (Height) SUBe : LED 6 digits ; 21mm (Height)
Platter Size	195 x 170mm (W x D)
Dimensions	196 x 100 x 275 mm (W x H x D)
Operating Temperature	0°C ~ 40°C (32°F ~ 104°F)
Option	Platter 235 x 200 (W x D)

SUB Aircharge

IP68 / IP69 Waterproof



304 Stainless



- Wireless charging safer and longer life than DC Jack

Capacity	3 / 3 / 6 / 6 / 15 / 15 Kg
Division	0.5 / 1 / 1 / 2 / 2 / 5 g
Power	12V / 1.5A (15W) output QI TX module + 3.7V 3200mA (18650 Lithium Ion battery)
Display	SUB : LCD 6 digits ; 25mm (Height) SUBe : LED 6 digits ; 21mm (Height)
Platter Size	195 x 170mm (W x D)
Dimensions	196 x 100 x 275 mm (W x H x D)
Operating Temperature	0°C ~ 40°C (32°F ~ 104°F)
Option	Platter 235 x 200 (W x D)

FEATURES

Advanced ARM-Based 32-Bit MCU with Precision 24-Bit ADC

Designed for low-power applications, this microcontroller unit (MCU) and a high-precision 24-bit analog-to-digital converter (ADC), ensuring efficient, responsive, and accurate performance tailored for demanding weighing environments.

IP68 & IP69 Dust & Waterproof Testing

Rigorously tested to meet IP68 and IP69 standards, the Marin series delivers exceptional dust and water protection, making it ideal for demanding environments such as agriculture and seafood processing.

Advanced Smart Power Management System (Patented)

Dynamically adjusts power consumption based on user habits, enhancing energy efficiency while maintaining a smooth and uninterrupted user experience.

Multiple Power Options

Marin offers versatility with three battery types— lithium, dry cell, and lead-acid. The dry battery model can also include of an AC adapter for plugged-in use.

21700 Lithium-Ion Battery Pack

AirCharge utilizes high-cycle 21700 lithium-ion batteries from world-renowned manufacturers, offering extended lifespan, enhanced reliability, and peace of mind for users.

Specially Designed Power Circuit

Features overcharge, over-discharge, and auto shut-off protection mechanisms, improving battery longevity and ensuring overall system reliability.

Seamless Data Transfer

Marin solves transmission issues in waterproof scales with stable Wi-Fi or Bluetooth wireless data transfer.

Ergonomic and Durable Design

Marin features an ABS housing and a food-grade stainless steel 304 weighing pan, ensuring durability and ease of handling with side-grooved handles. Additionally, its mechanical keypad design offers enhanced durability and excellent water resistance, making it highly reliable even in humid conditions.

Superior Electromagnetic and Electrostatic Interference Resistance

Engineered to resist electromagnetic and electrostatic disturbances, ensuring consistent and stable performance.

Clear and Adjustable Display Brightness

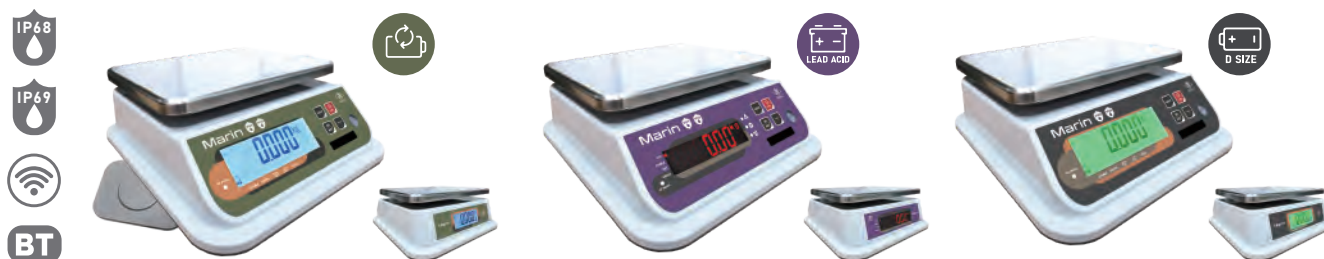
It includes multi-stage backlight or LED light brightness adjustment, offering four selectable brightness levels to ensure clear visibility under any lighting conditions.

Dual Display Options

Marin features front and rear display for both LCD and LED.

Marin LCD / Marin LED

IP68 / IP69 Waterproof



Capacity	3 / 3 / 6 / 6 / 15 / 15 / 30 / 30 kg		
Division	0.5 / 1 / 1 / 2 / 2 / 5 / 5 / 10 g		
Battery	Li-ion rechargeable battery pack DC 3.7V 5300mA (21700)	Lead-acid rechargeable battery DC6V / 4Ah	D size batteries (not included) 4 x 1.5V Alkaline batteries or 4 x 1.2V NiCd/NiMH batteries (remove batteries to charge)
Power	AC 100V ~ 240V (±10%) adapter + 12V / 1.5A (15W) output Qi TX module	AC 100V ~ 240V (±10%) adapter with 12V / 1A output	
Display	Marin : 6 digits/ 25mm (height) White LED backlight Marin LED : 6 digits/ 21mm (height) Red LED display		6 digits/ 25mm (height) Green LED backlight
Platter Size	235 x 200mm (W x D)		
Dimensions	270 x 124 x 310mm (W x H x D)		
Operating Temperature	0°C ~ 40°C (32°F ~ 104°F)		
Option	<ul style="list-style-type: none"> • Bluetooth or Wi-Fi • Rear display : Marin 21mm (height) Marin LED: 21mm (height) 		

FEATURES

- Advanced ARM-Based 32-Bit MCU with Precision 24-Bit ADC
- IP68 Dust & Waterproof Certification
- Advanced Smart Power Management System(Patented)
- Multiple Power Options
- Standard 18650 Lithium-Ion Battery
- Specially Designed Power Circuit
- Ergonomic and Durable Design
- Superior Electromagnetic and Electrostatic Interference Resistance
- Clear and Adjustable Display
- High Precision and Fast Sampling

NEO ELW / NEO ESW / NEO ESW-E

IP68 Waterproof



NEO ELW
AirCharge



NEO ELW



NEO ELW
(Dry Battery)



NEO ESW
AirCharge

NEO ESW-E
AirCharge

NEO ESW

NEO ESW-E

NEO ESW
(Dry Battery)



Capacity

3 / 3 / 6 / 6 / 15 / 15 / 30 / 30 kg

Division

0.5 / 1 / 1 / 2 / 2 / 5 / 5 / 10 g

Battery

Li-ion rechargeable battery pack
DC 3.7V 6100mA (18650-2P)

Lead-acid rechargeable battery
DC6V / 4Ah

D size batteries (not included)
4 x 1.5V Alkaline batteries or
4 x 1.2V NiCd/NiMH batteries
(remove batteries to charge)

Power

AC 100V ~ 240V (±10%) adapter +
12V / 1.5A (15W) output
QI TX module

AC 100V ~ 240V (±10%) adapter with
12V / 1A output

Display

NEO ELW / ESW LCD : 6 digits/ 25mm (height) White LED backlight
NEO ESW-E LED : 6 digits/ 21mm (height) Red LED display

6 digits/ 25mm (height)
Green LED backlight

Platter Size

235 x 200mm (W x D)

Dimensions
(W x H x D)

NEO ELW : 270 x 124 x 310mm
NEO ESW : 240 x 120 x 280mm

Operating Temperature

0°C ~ 40°C (32°F ~ 104°F)

FEATURES

- IP68 certified by SGS
- EU-TYPE EXAMINATION CERTIFICATE : Number T10896
- 1/3,000 to 1/6,000 display resolution available
- Sealed waterproof silica gel strip blocks water from infiltrating into the scale
- Stainless steel made for anti-rust
- Concave handle for easy carrying
- **Approval Model :**
1/3,000 display resolution, single range or multi-range

ELW Plus / ESW Plus



ELW Plus
ABS Plastic

ESW Plus
304 Stainless

Capacity	3 / 6 / 15 / 30 Kg
Division	0.5 / 1 / 5 / 5 g
Power	AC 100V ~ 240V (±10%) adapter + DC 6V / 4Ah rechargeable battery
Display	6 digits ; 25mm (Height) White LED backlight (LCD Display)
Platter Size	235 x 200mm (W x D)
Dimensions (W x H x D)	ELW⁺ : 270 x 124 x 310mm ESW⁺ : 240 x 120 x 280mm
Operating Temperature	-10°C ~ 40°C (14°F ~ 104°F) (Approval)

ELW-E Plus / ESW-E Plus



ELW Plus
ABS Plastic

ESW Plus
304 Stainless

Capacity	3 / 6 / 15 / 30 Kg
Division	0.5 / 1 / 5 / 5 g
Power	AC 100V ~ 240V (±10%) adapter + DC 6V / 4Ah rechargeable battery
Display	6 digits ; 15mm (Height) LED Display
Platter Size	235 x 200mm (W x D)
Dimensions (W x H x D)	ELW-E⁺ : 270 x 124 x 310mm ESW-E⁺ : 240 x 120 x 280mm
Operating Temperature	-10°C ~ 40°C (14°F ~ 104°F) (Approval)

ELW Plus / ESW Plus AirCharge



ELW Plus
ABS Plastic

ESW Plus
304 Stainless

Capacity	3 / 6 / 15 / 30 Kg
Division	0.5 / 1 / 5 / 5 g
Power	12V / 1.5A (15W) output Qi TX module + 3.7V 6100mA (18650 dual battery)
Display	6 digits ; 25mm (Height) White LED backlight (LCD Display)
Platter Size	235 x 200mm (W x D)
Dimensions (W x H x D)	ELW⁺ : 270 x 124 x 310mm ESW⁺ : 240 x 120 x 280mm
Operating Temperature	-10°C ~ 40°C (14°F ~ 104°F) (Approval)

ELW-E Plus / ESW-E Plus AirCharge



ELW Plus
ABS Plastic

ESW Plus
304 Stainless

Capacity	3 / 6 / 15 / 30 Kg
Division	0.5 / 1 / 5 / 5 g
Power	12V / 1.5A (15W) output Qi TX module + 3.7V 6100mA (18650 dual battery)
Display	6 digits ; 15mm (Height) LED Display
Platter Size	235 x 200mm (W x D)
Dimensions (W x H x D)	ELW-E⁺ : 270 x 124 x 310mm ESW-E⁺ : 240 x 120 x 280mm
Operating Temperature	-10°C ~ 40°C (14°F ~ 104°F) (Approval)

FEATURES

- IP68 certified by SGS
- EU-TYPE EXAMINATION CERTIFICATE : Number T10896
- 1/3,000 to 1/6,000 display resolution available
- Battery-powered and energy-efficient with up to 500 hours of operation
- Sealed waterproof silica gel strip blocks water from infiltrating into the scale
- Concave handle for easy carrying
- **Approval Model :**
1/3,000 display resolution, single range or multi-range

ELW / ESW Dry

Dry Battery-powered



ELW Plus
ABS Plastic

ESW Plus
304 Stainless



Capacity	3 / 6 / 15 / 30 Kg
Division	0.5 / 1 / 5 / 5 g
Power	4 x D size dry batteries (alkaline) (not included)
Display	6 digits ; 25mm (Height) Green LED backlight (LCD Display)
Platter Size	235 x 200mm (W x D)
Dimensions (W x H x D)	ELW Dry : 270 x 124 x 310mm ESW Dry : 240 x 120 x 280mm
Operating Temperature	-10°C ~ 40°C (14°F ~ 104°F) (Approval)

FEATURES

- Up to 1/15,000 display resolution. High Speed 24bits AD
- Auto zero tracking and pre-tare
- Simple counting ; Gross/Net indication ; Hold function
- Weight and quantity over-limit warning
- Built-in power saving function to extend usage time
- 5 brightness setting selectable for LCD backlight

AXW



Capacity	3 / 7.5 / 15 / 30 Kg
Division	0.2 / 0.5 / 1 / 2 g
Power	AC 100V ~ 240V (±10%) adapter + 18650 3.7V Lithium Ion battery
Display	LCD 6 digits ; 28 mm (Height) ; LED backlight
Platter Size	290 x 230mm (W x D)
Dimensions	297 x 106 x 345mm (W x H x D)
Operating Temperature	0°C ~ 40°C (32°F ~ 104°F)
Option	RS232 or Wi-Fi or Bluetooth

FXW



Capacity	3 / 3 / 6 / 7.5 / 12 / 15 / 30 / 30 Kg
Division	0.2 / 0.5 / 1 / 0.5 / 2 / 1 / 2 / 5 g
Power	AC 100V ~ 240V (±10%) adapter + 18650 3.7V Lithium Ion battery
Display	LCD 6 digits ; 28 mm (Height) ; LED backlight
Platter Size	300 x 225mm (W x D)
Dimensions	300 x 110 x 330mm (W x H x D)
Operating Temperature	0°C ~ 40°C (32°F ~ 104°F)
Option	RS232 or Wi-Fi

NXW



Capacity	3 / 7.5 / 15 / 30 Kg
Division	0.2 / 0.5 / 1 / 2 g
Power	AC 100V ~ 240V (±10%) adapter + 18650 3.7V Lithium Ion battery
Display	LCD 6 digits ; 28 mm (Height) ; LED backlight
Platter Size	290 x 230mm (W x D)
Dimensions	297 x 106 x 345mm (W x H x D)
Operating Temperature	-10°C ~ 40°C (14°F ~ 104°F)
Option	RS232 or Wi-Fi or Bluetooth

FEATURES

- Faster weighing stability
- Faster zero return
- Zero key and Tare key react faster
- Option RS232 interface
- High-speed 24-bit AD for faster display reading
- Preset weight or quantity ; Weight accumulation
- Simple counting ; Gross/Net indication ; Hold function ; Check mode Lo / Hi / OK
- **Non-approval Model :**
1/3,000, 1/6,000, 1/15,000 up to 1/30,000 display resolution
- **Approval Model :**
1/3,000 display resolution, single range or multi-range

AWH3 / AWH4



- Compact size

Operating Temperature :

Non-approval model : 0°C ~ 40°C (32°F ~ 104°F)

Approval model : -10°C ~ 40°C (14°F ~ 104°F)

Capacity	3 / 3 / 6 / 7.5 / 15 / 15 / 30 / 30 Kg
Division	0.1 / 0.2 / 0.2 / 0.5 / 0.5 / 1 / 1 / 2 g
Power	AWH3 : AC 110V / 230V (±10%) DC 6V / 4Ah rechargeable battery AWH4 : AC 100V ~ 240V (±10%) DC 6V / 4Ah rechargeable battery
Display	LCD 6 digits ; 28mm (Height) LED back-light
Platter Size	280 x 230mm (W x D)
Dimensions	275 x 105 x 310mm (W x H x D)
Option	RS232 / Wi-Fi / Bluetooth

FDH3-W / FDH4-W



- Up to 1/30,000 display resolution

Operating Temperature :

Non-approval model : 0°C ~ 40°C (32°F ~ 104°F)

Approval model : -10°C ~ 40°C (14°F ~ 104°F)

Capacity	3 / 3 / 6 / 7.5 / 12 / 15 / 30 / 30 Kg
Division	0.2 / 0.5 / 1 / 0.5 / 2 / 1 / 2 / 5 g
Power	FDH3-W : AC 110V / 230V (±10%) DC 6V / 4Ah rechargeable battery FDH4-W : AC 100V ~ 240V (±10%) DC 6V / 4Ah rechargeable battery
Display	LCD 6 digits ; 28mm (Height) LED back-light
Platter Size	300 x 225mm (W x D)
Dimensions	300 x 110 x 330mm (W x H x D)
Option	RS232 / Wi-Fi

SAH3-W / SAH4-W / WA2



Operating Temperature :

Non-approval model : 0°C ~ 40°C (32°F ~ 104°F)

Approval model : -10°C ~ 40°C (14°F ~ 104°F)

Capacity	1.5 / 3 / 6 / 7.5 / 15 / 30 Kg
Division	0.1 / 0.2 / 0.2 / 0.5 / 1 / 2 g
Power	SAH3-W : AC 110V / 230V (±10%) DC 6V / 4Ah rechargeable battery SAH4-W : AC 100V ~ 240V (±10%) DC 6V / 4Ah rechargeable battery
Display	LCD 6 digits ; 28mm (Height) LED back-light
Platter Size	280 x 230mm (W x D)
Dimensions	297 x 106 x 345mm (W x H x D)
Option	RS232 / Wi-Fi / Bluetooth

FEATURES

- Large LCD display with LED backlight
- Kilogram (kg), gram (g), pound (lb) and ounce (oz) weighing modes

- Full range tare; Auto-zero tracking; Adjustable gravity value

SI-130



- Up to 1/5,000 display resolution

**Standard
Plastic Platter**

**Option
Stainless Platter**

Capacity	2.5 / 5 / 10 / 15 Kg
Division	0.5 / 1 / 2 / 5 g
Power	Adaptor DC 12V or 4 x UM-2 1.5V dry battery (not included)
Display	LCD 5 1/2 digits ; 18mm (Height) ; LED backlight (Optional)
Platter Size	196 x 174mm (Plastic platter) 198 x 176mm (Steel platter)
Dimensions	213 x 80.4 x 284mm (W x H x D)
Operating Temperature	0°C ~ 40°C (32°F ~ 104°F)

SI-132



- Up to 1/30,000 display resolution
- Digital calibration
- Low power indication and auto power off

Capacity	1.5 / 3 / 6 / 15 Kg
Division	0.05 / 0.1 / 0.2 / 0.5 g
Power	Adaptor DC 12V or 4 x UM-2 1.5V dry battery (not included)
Display	LCD 6 digits ; 18mm (Height) ; LED backlight
Platter Size	196 x 174mm (Plastic platter) 198 x 176mm (Steel platter)
Dimensions	213 x 81.2 x 284mm (W x H x D)
Operating Temperature	0°C ~ 40°C (32°F ~ 104°F)
Option	RS232

TAW



- AC / DC compatible: Power cord or batteries supported
- Various Functions: Fast and accurate weighing, simple counting, High / Low / OK weight check, full-range tare
- Other considerate designs: Large LCD screen with backlight, auto power off, auto calibration, low battery alarm, dual overload protections, and light weight

Capacity	3 / 7.5 / 15 Kg
Division	0.2 / 0.5 / 1 g
Power	AC 110V / 220V (±10%) + DC 6V / 10Ah rechargeable battery
Platter Size	232 x 184mm
Dimensions	230 x 98 x 260mm (W x H x D)

KPS



- Up to 1/5,000 display resolution
- Auto calibration
- Units: g / ozt / dwt / lb / oz
- Full range tare; Auto zero tracking
- Low power indication and auto power off

Capacity	0.5 / 1 / 2 Kg
Division	0.1 / 0.2 / 0.5 g
Power	Adaptor DC 9V or 9V 100mA dry battery x 1(not included)
Display	LCD 5 digits
Platter Size	135 x 135mm
Dimensions	138 x 45 x 190mm (W x H x D)

FEATURES

- 1/30,000 and 1/60,000 display resolutions available
- Digital calibration
- LCD display with LED backlight, more durable, more energy saving
- Auto zero tracking, double overload protection
- Weighing, counting and percentage modes
- Adjustable gravity value
- Selectable default weighing
- Built-in RS232

BH3

Precision Balance



Capacity	150 / 300 / 600 g (Round) 1200 / 3000 g (Square)
Division	0.005 / 0.01 / 0.02 g (Round) 0.02 / 0.05 g (Square)
Power	Adaptor DC 12V or 4 x UM-2 1.5V dry battery (not included)
Display	LCD 6 1/2 digits ; 16mm (Height) ; LED backlight
Platter Size	Round : Ø116mm Square : 114 x 124 x 6.5mm (1200 / 3000g)
Dimensions	175 x 56 x 226mm (W x H x D)
Operating Temperature	5°C ~ 35°C (41°F ~ 95°F)
Option	RTC



Both IP68 & IP69 Ratings

THE NEXT GENERATION IN WATERPROOF WEIGHING TECHNOLOGY

Conquer Extreme Environments
Achieve Unmatched Weighing Precision



High-temp
Water Jet
Resistant



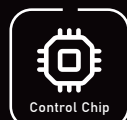
100 Bar
Water Jet
Resistant



Multi-color
Backlight



55mm
large-font
LCD



Latest
Industrial
Control Chip



Stainless
Steel
SUS 304



Waterproof
Mechanical
Switch

FEATURES

SGS Certified Dual Protection Levels

The only one on the market, leading the industry and providing exceptional water and dust resistance. Featuring waterproof mechanical keys & cable glands.

High-Performance Industrial Control Chip

Provide superior performance and connectivity.

Meet Hygiene Requirements

Use food-Grade 304 Stainless Steel Housing and hex screws ideal for food processing.

Large LCD Display

55mm high characters, no/auto/always-on backlight modes with four adjustable brightness levels ensuring easy readability in various environments.

Multi-Color LED Backlight

Five backlight colors - red, green, yellow, orange, and white - are available to choose to indicate High / Low / OK statuses.



Multi-Functional Indicators

Includes pre-tare, auto average unit weight, gross/net weight indicators, low power indicator, and auto power-off function for convenient operation.

Easy Counting Function

Convenient to operate, ensuring fast and efficient counting.

Various Option cards with Dual independent UARTs

Meet different needs, expand functionality, enhance product flexibility and better support various professional applications including MODBUS RTU, MODBUS TCP.

Complies with Latest European Safety Standards

EU safety and EMC standards EN 61010-1:2010/A1:2019 and EN IEC 61326-1:2021 for industrial environments, ensuring safety and reliability.

Waterproof Vent

Prevent pressure build up inside Housing.

Galaxy ABS Plastic Version

Available in an ABS plastic body version to meet different market demands.

Optional Stainless Steel SS Platform

Made with 304 stainless steel with IP67 stainless steel L/C to enhance durability. Platform size 40 x 50mm with capacity of 150/300KG.

SPECIFICATIONS

System	Processor ADC	32 bit CPU with IEC60730 functional safety compliance for temperature range of -40°C to +105°C 24-bit ADC with ultra-low-noise amplifier		
Display	LCD Backlight Brightness	6-digit LCD display with 55mm high characters Multi-color LED, default in White or can select Red, Yellow, Orange or Green 4-level adjustment at 25%, 50%, 75%, 100%		
Mechanical Design	Body Key Connector Screw Mounting	SUS 304 Housing Mechanical key PA66 plastic, compliant with UL 94V-2 rating / Optional upgrade to SUS304 material SUS 304 Hex head screw SUS 304 U shaped stand for Queen / ABS pole holder for Galaxy		
I/O ports	L/C RS-232 Pressure relief valve Power line	Options	1.RS232 Cable 2.RELAY card or RS-232/485 card or B/T 4.0 card or Wi-Fi card or RJ45 ethernet card or USB card for data log	3.Foot switch 4.U shape stand (Galaxy)
Power	Built-in Switching power Battery	AC 100V ~ 240V DC 6V/4Ah rechargeable lead-acid battery		
Certificate	EMC & Safety	FCC, EMC, LVD, NTEP		
Environment	Dust & Water Proof Operating Temperature Humidity	Both IP68 & IP69 -10°C ~ 40°C (14°F ~ 104°F) 20% ~ 85% RH non-condensing		
Dimensions	W x H x D	232 x 150 x 80mm		

FEATURES

- IP68 waterproof check-weighing indicator with 304 stainless steel housing with built in RS232
- Two adjustable weighing speed : moderate and slow
- Selectable weighing units : Kilogram(kg), gram(g), pound(lb), and ounce(oz)

PH3



- Up to 1/30,000 display resolution
- Analog High/Low/Ok indication
- 20 keys with number keys

Power	AC 100V ~ 240V (±10%) 12V / 1A adaptor
Display	LCD 6 digits ; 25 mm (Height); LED backlight
Dimensions	256 x 170 x 90mm(W x H x D)
Operating Temperature	-10°C ~ 40°C (14°F ~ 104°F) (Approval)
Option	RS232 cable Relay card

PWH3



- Up to 1/15,000 display resolution
- Hold function, Check mode High / Low / OK, Auto average unit weight, Animal scale function

Power	AC 100V ~ 240V (±10%) 12V / 1A adaptor
Display	LCD 6 digits ; 25 mm (Height); LED backlight
Dimensions	256 x 170 x 90mm(W x H x D)
Operating Temperature	-10°C ~ 40°C (14°F ~ 104°F) (Approval)
Option	RS232 cable

P120-S



- IP68 : mist-proof, waterproof and dustproof
- Stand alone batching mode or connect to PLC for external system control
- High performance A/D : 0.12 μ VD input sensitivity, 120(max.) times/sec conversion rate

Power	AC 100V ~ 240V (±10%)
Display	LCD 6 digits ; 16 mm (Height); LED backlight
Dimensions	256 x 170 x 90mm(W x H x D)
Operating Temperature	0°C ~ 40°C (32°F ~ 104°F)

GTW / GTW+RJ45



- IP68 : mist-proof, waterproof and dustproof, ABS housing with built-in RS232 terminal
- Up to 1/30,000 display resolution
- High Speed 24bits AD ; Display reading speed faster
- Faster weighing stability
- Zero key and Tare key react faster
- Preset weight or quantity ; Weight accumulation
- Simple counting; Gross/Net indication ; Hold function ; Check mode High / Low / OK
- **GTW+RJ45** : RJ-45 data-transfer interface

Power	AC 110V / 230V (±10%) + DC 6V/ 4Ah rechargeable battery
Display	LCD 6 digits ; 28 mm (Height); LED backlight
Dimensions	238 x 156 x 90mm(W x H x D)
Operating Temperature	0°C ~ 40°C (32°F ~ 104°F)
Option	RS232 cable U shape stand Relay card or Wi-Fi or Bluetooth or RJ45

GW / QW**GW ABS Plastic****QW 304 Stainless**

- IP68 : mist-proof, waterproof and dustproof built in RS232
- Up to 1/15,000 display resolution
- Hold function, Check mode High / Low / OK, Auto average unit weight, Animal scale function
- Low power indication and auto power off
- Full range tare, Pre-tare, Auto zero tracking, Sampling counting, Gross/ Net Indication

Power	AC 110V / 230V ($\pm 10\%$) DC 6V / 4Ah rechargeable battery
Display	LCD 6 digits ; 55 mm (Height) ; LED backlight
Dimensions (W x H x D)	GW : 238 x 156 x 90mm QW : 232 x 150 x 80mm
Operating Temperature	0°C ~ 40°C (32°F ~ 104°F) Approval Model : -10°C ~ 40°C (14°F ~ 104°F)
Option	RS232 cable Relay card or Wi-Fi or Bluetooth Foot switch U shape stand for GW

GWS / QWS**GWS ABS Plastic****QWS 304 Stainless**

- IP68 : mist-proof, waterproof and dustproof built in RS232
- Extra-large and wide LCD display 55mm height, with COOL WHITE LED backlight
- Quick access to hold function, weight check High / Low / OK
- Selectable tare range or up to full range tare; Pre-tare

Power	AC 110V / 230V ($\pm 10\%$) + DC 6V / 4Ah rechargeable battery
Display	LCD 6 digits ; 55 mm (Height); Cool White LED backlight
Dimensions (W x H x D)	GWS : 238 x 156 x 90mm QWS : 232 x 150 x 80mm
Operating Temperature	0°C ~ 40°C (32°F ~ 104°F) Approval Model : -10°C ~ 40°C (14°F ~ 104°F)
Option	RS232 cable Relay card or Wi-Fi or Bluetooth Foot switch U shape stand for GWS

GoW / QoW

Wireless Bluetooth

**GoW ABS Plastic****QoW 304 Stainless**

- Built-in Bluetooth need to work with wireless platform P.39
- IP68 : mist-proof, waterproof and dustproof built in RS232
- Extra-large and wide LCD display 6 digits with 55mm height
- Low power indication and auto power off
- Hold function, Check mode High / Low / OK, Auto average

Power	AC 110V / 230V ($\pm 10\%$) + DC 6V / 4Ah rechargeable battery
Display	LCD 6 digits ; 55 mm (Height); Cool White LED backlight
Dimensions (W x H x D)	GoW : 238 x 156 x 90mm QoW : 232 x 150 x 80mm
Operating Temperature	0°C ~ 40°C (32°F ~ 104°F) Approval Model : -10°C ~ 40°C (14°F ~ 104°F)
Option	RS232 cable Relay card or Wi-Fi or Bluetooth Foot switch U shape stand for GoW

FEATURES

- Up to 1/15,000 display resolution. High Speed 24bits AD
- Auto zero tracking and pre-tare
- Simple counting; Gross/Net indication; Hold function
- Weight and quantity over-limit warning
- Built-in power saving function to extend usage time
- 5 brightness setting selectable for LCD backlight

SXW



Power	AC 100V ~ 240V (±10%) adapter + 18650 3.7V Lithium Ion battery
Display	LCD 6 digits ; 28 mm (Height) ; LED backlight
Dimensions	276 x 170 x 136mm (W x H x D)
Operating Temperature	0°C ~ 40°C (32°F ~ 104°F)
Option	RS232 or Wi-Fi or Bluetooth Relay card

TXW



Power	AC 100V ~ 240V (±10%) adapter + 18650 3.7V Lithium Ion battery
Display	LCD 6 digits ; 28 mm (Height) ; LED backlight
Dimensions	280 x 220 x 117mm (W x H x D)
Operating Temperature	0°C ~ 40°C (32°F ~ 104°F)
Option	RS232 or Wi-Fi or Bluetooth Relay card

FEATURES

- Simple counting; Gross/Net indication; Hold function; Check mode High / Low / OK
- Pre-tare function

HWH3 / HWH4



Power	HWH3 : AC 110V / 230V (±10%) DC 6V / 4Ah rechargeable battery
	HWH4 : AC 100 ~ 240V (±10%) DC 6V / 4Ah rechargeable battery

Display	LCD 6 digits ; 28 mm (Height); LED backlight
---------	---

Dimensions	260 x 210 x 117mm (W x H x D)
------------	---------------------------------

Operating Temperature	0°C ~ 40°C (32°F ~ 104°F)
	Approval Model : -10°C ~ 40°C (14°F ~ 104°F)

Option	RS232 or Wi-Fi or Bluetooth Relay card
--------	---

- Kilogram (kg) and pound (lb) weighing modes
- Stable sampling range setting function

RWH3 / RWH4



Power	RWH3 : AC 110V / 230V (±10%) DC 6V / 4Ah rechargeable battery
	RWH4 : AC 100 ~ 240V (±10%) DC 6V / 4Ah rechargeable battery

Display	LCD 6 digits ; 28 mm (Height); LED backlight
---------	---

Dimensions	260 x 210 x 117mm (W x H x D)
------------	---------------------------------

Operating Temperature	0°C ~ 40°C (32°F ~ 104°F)
	Approval Model : -10°C ~ 40°C (14°F ~ 104°F)

Option	RS232 or Wi-Fi or Bluetooth Relay card
--------	---

FEATURES

- 1/3,000, 1/6,000, 1/15,000 up to 1/30,000 display resolution
- Kilogram (kg) and pound (lb) weighing modes

TWH3 / TWH4



- Pre-tare function
- Stable sampling range setting function
- Temperature compensation available for non-approval model to be more accurate and stabler

Power	TWH3 : AC 110V / 230V (±10%) DC 6V / 4Ah rechargeable battery
	TWH4 : AC 100 ~ 240V (±10%) DC 6V / 4Ah rechargeable battery

Display	LCD 6 digits ; 28 mm (Height); LED backlight
---------	---

Dimensions	280 x 220 x 117mm (W x H x D)
------------	---------------------------------

Operating Temperature	0°C ~ 40°C (32°F ~ 104°F)
	Approval Model : -10°C ~ 40°C (14°F ~ 104°F)

Option	RS232 or Wi-Fi or Bluetooth Relay card
--------	---

KWH3 / KWH4



- Preset weight or quantity ; weight accumulation
- Simple counting ; Gross/Net indication ; Hold Function ; Check Mode High / Low / OK

Power	KWH3 : AC 110V / 230V (±10%) DC 6V / 4Ah rechargeable battery
	KWH4 : AC 100 ~ 240V (±10%) DC 6V / 4Ah rechargeable battery

Display	LCD 6 digits ; 28 mm (Height); LED backlight
---------	---

Dimensions	245 x 195 x 156mm (W x H x D)
------------	---------------------------------

Operating Temperature	-10°C ~ 40°C (14°F ~ 104°F) (Approval)
-----------------------	---

Option	RS232 or Wi-Fi or Bluetooth Relay card
--------	---

SBH3-W / SBH4-W



(SBH3-W)



- 1/3,000, 1/6,000, 1/15,000 up to 1/30,000 display resolution
- Checkweighing for High / Low / OK limits with beeper warning
- Quick access for checkweighing settings weight totalization and auto backlight

Power **SBH3-W** : AC 110V / 230V ($\pm 10\%$)
DC 6V / 4Ah rechargeable battery

SBH4-W : AC 100V ~ 240V ($\pm 10\%$)
DC 6V / 4Ah rechargeable battery

Display LCD 6 digits ; 28 mm (Height) ;
LED backlight

Dimensions 256 x 170 x 90mm (W x H x D)

Operating Temperature $-10^{\circ}\text{C} \sim 40^{\circ}\text{C}$ ($14^{\circ}\text{F} \sim 104^{\circ}\text{F}$)
(Approval)

Option RS232 or Wi-Fi or Bluetooth
Relay card

- Energy-efficient switching power supply adapts to different power source voltages (AC 100V-240V)
- Auto power-off battery protection circuitry

WQ2



- LCD display with bright backlight
- Enclosed with indicator dust cover, rechargeable battery and power cord

Power AC 110V / 230V ($\pm 10\%$)
DC 6V / 4Ah rechargeable battery

Display Bright LCD display
(28mm digits height)

Dimensions 176 x 156 x 164mm (W x H x D)

Operating Temperature $-10^{\circ}\text{C} \sim 40^{\circ}\text{C}$ ($14^{\circ}\text{F} \sim 104^{\circ}\text{F}$)
(Approval)

Option RS232 or Wi-Fi or Bluetooth
Relay card

- 15 levels sampling speed available
- Easy to set any specification and up to 1/15,000 display resolution

FB530



- 1/3,000, 1/6,000, 1/15,000 up to 1/30,000 display resolution
- Weighing units available in kg, g, lb and viss
- Digital calibration

Power AC 110V / 230V ($\pm 10\%$)
DC 6V / 4Ah rechargeable battery

Display Bright LCD display
(26mm digits height)

Dimensions 176 x 156 x 164mm (W x H x D)

Operating Temperature $-10^{\circ}\text{C} \sim 40^{\circ}\text{C}$ ($14^{\circ}\text{F} \sim 104^{\circ}\text{F}$)
(Approval)

Option Back display

- Dual range model available: Multi-range or Multi-interval
- Preset weight or quantity; Pre-tare; Weight accumulation; Check mode High / Low / OK

FM / FMR

Power	Adaptor Input 100 ~ 240V AC 50 ~ 60 Hz ; Output 12V / 1000 mA or 5 x AA size dry batteries
Display	LCD 6 digits ; 25.4 x 10 mm (Height) ; LED backlight
Dimensions	225 x 60 x 135mm (including protrusions) 193 x 50 x 95mm (excluding protrusions)
Operating Temperature	-10°C ~ 40°C (14°F ~ 104°F) (Approval)
Option	RS232 / 485 (switch by jumper) with RTC Ni-MH Rechargeable battery

- Large LCD (digit height 25.4mm) display with LED backlight
- Kilogram (kg) and pound (lb, not for EC type approval version) weighing units
- Auto zero tracking; Animal scale function; Data accumulation function

MTWH4 / DTWH4 / PTWH4 / LTWH4



- 1/3,000, 1/6,000, 1/15,000 up to 1/30,000 display resolution
- Pre-tare function
- Kilogram (kg) and pound (lb) weighing modes
- Stable sampling range setting function
- Temperature compensation available for non-approval model to be more accurate and stabler

Power
TWH3 : AC 110V / 230V (±10%)
 DC 6V / 4Ah rechargeable battery
TWH4 : AC 100V ~ 240V (±10%)
 DC 6V / 4Ah rechargeable battery

Display LCD 6 digits ; 28mm (Height)
LED backlight

Platter Size **M** : 375 x 520mm ; **D** : 420 x 520mm
P : 420 x 520mm ; **L** : 460 x 600mm

Dimensions 280 x 220 x 117mm (W x H x D)

Operating Temperature 0°C ~ 40°C (32°F ~ 104°F)
OIML Approval Model (TWH3) :
 -10°C ~ 40°C (14°F ~ 104°F)

Option RS232 or Wi-Fi or Bluetooth
Relay card

LPH3



- IP68 waterproof check-weighing indicator with 304 stainless steel housing, built in RS232
- Two adjustable weighing speed: moderate and slow
- Up to 1/30,000 display resolution

Power AC 100 ~ 240V 12V/1A adaptor +
6V / 4Ah rechargeable batter

Display LCD 6 digits ; 25mm (Height)
LED backlight

Platter Size 460 x 600mm

Dimensions 256 x 170 x 90mm (W x H x D)

Operating Temperature -10°C ~ 40°C (14°F ~ 104°F)

Option RS232 cable
Relay card

- Analog High/Low/Ok indication
- Selectable weighing units: Kilogram(kg), gram(g), pound(lb), and ounce(oz)

LPWH3



- IP68 waterproof check-weighing indicator with 304 stainless steel housing, built in RS232
- Two adjustable weighing speed: moderate and slow

Power AC 100 ~ 240V 12V/1A adaptor +
6V / 4Ah rechargeable batter

Display LCD 6 digits ; 25mm (Height)
LED backlight

Platter Size 460 x 600mm

Dimensions 256 x 170 x 90mm (W x H x D)

Operating Temperature -10°C ~ 40°C (14°F ~ 104°F)

Option RS232 cable

- Up to 1/15,000 display resolution
- Selectable weighing units: Kilogram(kg), gram(g), pound(lb), and ounce(oz)

FEATURES

- 1/3,000, 1/6,000, 1/15,000 up to 1/30,000 display resolution
- Simple counting; Gross/Net indication; Hold function; Check mode High / Low / OK
- Pre-tare function
- Kilogram (kg) and pound (lb) weighing modes
- Stable sampling range setting function

MHWH4 / DHWH4 / PHWH4 / LHWH4



Power	HWH3 : AC 110V / 230V (±10%) DC 6V / 4Ah rechargeable battery HWH4 : AC 100V ~ 240V (±10%) DC 6V / 4Ah rechargeable battery
Display	LCD 6 digits ; 28mm (Height) LED backlight
Platter Size	M : 375 x 520mm ; D : 420 x 520mm P : 420 x 520mm ; L : 460 x 600mm
Dimensions	280 x 210 x 117mm (W x H x D)
Operating Temperature	0°C ~ 40°C (32°F ~ 104°F) OIML Approval Model (HWH3): -10°C ~ 40°C (14°F ~ 104°F)
Option	RS232 or Wi-Fi or Bluetooth Relay card

LRWH3 / LRWH4



Power	LRWH3 : AC 110V / 230V (±10%) DC 6V / 4Ah rechargeable battery LRWH4 : AC 100V ~ 240V (±10%) DC 6V / 4Ah rechargeable battery
Display	LCD 6 digits ; 28mm (Height) LED backlight
Platter Size	460 x 600mm
Dimensions	256 x 170 x 90mm (W x H x D)
Operating Temperature	0°C ~ 40°C (32°F ~ 104°F) OIML Approval Model (RWH3): -10°C ~ 40°C (14°F ~ 104°F)
Option	RS232 or Wi-Fi or Bluetooth Relay card

LKWH3 / LKWH4



Power	LKWH3 : AC 110V / 230V (±10%) DC 6V / 4Ah rechargeable battery LKWH4 : AC 100V ~ 240V (±10%) DC 6V / 4Ah rechargeable battery
Display	LCD 6 digits ; 28mm (Height) LED backlight
Platter Size	460 x 600mm
Dimensions	245 x 195 x 156mm (W x H x D)
Operating Temperature	0°C ~ 40°C (32°F ~ 104°F) OIML Approval Model (KWH3): -10°C ~ 40°C (14°F ~ 104°F)
Option	RS232 or Wi-Fi or Bluetooth Relay card

- Preset weight or quantity; weight accumulation

COUNTING SCALE

FEATURES

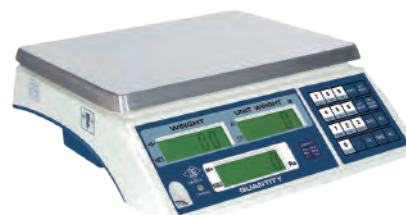
- 1/3,000, 1/6,000, 1/15,000 up to 1/30,000 display resolution
- High speed 24bits AD; Display reading speed faster
- Faster weighing stability
- Faster zero return
- Zero key and Tare key react faster
- Easily adjusted leveling feet for stability of the scale
- Option RS232

ALH3 / ALH4



Capacity	3 / 3 / 6 / 7.5 / 15 / 15 / 30 / 30 Kg
Division	0.1 / 0.2 / 0.2 / 0.5 / 0.5 / 1 / 1 / 2 g
Power	ALH3 : AC 110V / 230V (±10%) DC 6V / 4Ah rechargeable battery ALH4 : AC 100 ~ 240V (±10%) DC 6V / 4Ah rechargeable battery
Display	LCD 6 / 6 / 6 digits ; 14mm (Height) LED backlight
Platter Size	280 x 230mm (W x D)
Dimensions	275 x 105 x 310mm (W x H x D)
Operating Temperature	0°C ~ 40°C (32°F ~ 104°F) Approval Model : -10°C ~ 40°C (14°F ~ 104°F)
Option	RS232 or Wi-Fi or Bluetooth

FDH3-C / FDH4-C



Capacity	3 / 3 / 6 / 7.5 / 12 / 15 / 30 / 30 Kg
Division	0.2 / 0.5 / 1 / 0.5 / 2 / 1 / 2 / 5 g
Power	FDH3-C : AC 110V / 230V (±10%) DC 6V / 4Ah rechargeable battery FDH4-C : AC 100 ~ 240V (±10%) DC 6V / 4Ah rechargeable battery
Display	LCD 6 / 6 / 6 digits ; 18mm (Height) LED backlight
Platter Size	300 x 225mm (W x D)
Dimensions	300 x 110 x 330mm (W x H x D)
Operating Temperature	0°C ~ 40°C (32°F ~ 104°F) Approval Model : -10°C ~ 40°C (14°F ~ 104°F)
Option	RS232 or Wi-Fi

ACC3



- 1/6,000 and 1/7,500 display resolution
- 3 LCD displays with LED backlight
- Up to 251 accumulations
- Programmable unit weight of denomination
- Security password setting function
- New coin switch to old coin function for customer selection

Capacity	6 / 15 / 30 Kg
Division	1 / 2 / 5 g
Power	AC 110V / 230V (±10%) DC 6V / 4Ah rechargeable battery
Display	LCD 6 / 6 / 6 digits ; 14mm (Height) LED backlight
Platter Size	280 x 230mm (W x D)
Dimensions	320 x 180 x 280mm (W x H x D)
Operating Temperature	0°C ~ 40°C (32°F ~ 104°F)

FEATURES

- 1/3,000, 1/6,000, 1/15,000 up to 1/30,000 display resolution
- High speed 24bits AD; Display reading speed faster
- Faster weighing stability
- Faster zero return
- Zero key and Tare key react faster
- Weight and quantity over-limit warning
- IPX6 wash down design

JBCH3



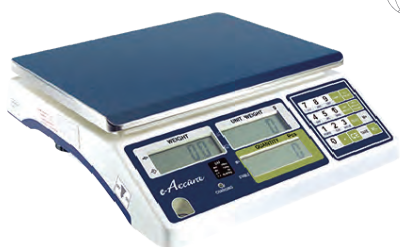
Capacity	3 / 6 / 7.5 / 15 / 30 / 60 / 75 Kg
Division	0.1 / 0.2 / 0.5 / 0.5 / 2 / 2 / 5 g
Power	AC 110V / 230V (±10%) DC 6V / 4Ah rechargeable battery
Display	LCD 6 / 6 / 6 digits ; 14mm (Height) LED backlight
Platter Size	334 x 254mm (W x D)
Dimensions	300 x 110 x 330mm (W x H x D)
Operating Temperature	0°C ~ 40°C (32°F ~ 104°F) Approval Model : -10°C ~ 40°C (14°F ~ 104°F)
Option	RS232 or Wi-Fi

KBCH3



Capacity	3 / 6 / 7.5 / 15 / 30 / 60 / 75 Kg
Division	0.1 / 0.2 / 0.5 / 0.5 / 2 / 2 / 5 g
Power	AC 110V / 230V (±10%) DC 6V / 4Ah rechargeable battery
Display	LCD 6 / 6 / 6 digits ; 14mm (Height) LED backlight
Platter Size	322 x 241mm (W x D)
Dimensions	400 x 110 x 300mm (W x H x D)
Operating Temperature	0°C ~ 40°C (32°F ~ 104°F) Approval Model : -10°C ~ 40°C (14°F ~ 104°F)
Option	RS232 or Wi-Fi

SAH3-C / CA2



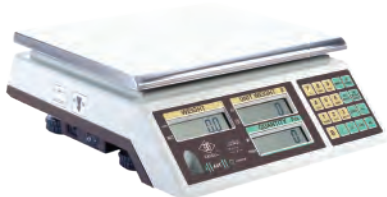
- Bright LCD display with LED backlight
- Overload protection design
- Enclosed with adjustable feet, bubble level, dust cover, rechargeable battery and power cord
- Selectable weight units: kg, lb or g, lb (depends on the request)

Capacity	3 / 3 / 6 / 7.5 / 15 / 15 / 30 / 30 Kg
Division	0.1 / 0.2 / 0.2 / 0.5 / 0.5 / 1 / 1 / 2 g
Power	AC 110V / 230V (±10%) DC 6V / 4Ah rechargeable battery
Display	LCD 5 / 5 / 6 digits ; 13 / 13 / 18mm (Height) ; LED backlight
Platter Size	290 x 220mm (W x D)
Dimensions	345 x 297 x 106mm (W x H x D)
Operating Temperature	0°C ~ 40°C (32°F ~ 104°F) Approval Model : -10°C ~ 40°C (14°F ~ 104°F)
Option	RS232 or Wi-Fi or Bluetooth

FEATURES

- High speed 24bits AD; Display reading speed faster
- Faster weighing stability
- Up to 1/15,000 display resolution
- Low power and charging status
- Faster zero return
- Zero key and Tare key react faster
- Vendor and customer sides LCD displays with LED backlight

AXC


BT


Capacity	3 / 6 / 7.5 / 15 / 30 Kg
Division	0.2 / 1 / 0.5 / 1 / 2 g
Power	AC 100V ~240V (±10%) adapter + 18650 Lithium Ion battery
Display	LCD 6 / 6 / 6 digits ; 14mm (Height) LED backlight
Dimensions	275 x 105 x 310mm (W x H x D)
Operating Temperature	0°C ~ 40°C (32°F ~ 104°F)
Option	RS232 or Wi-Fi or Bluetooth

FXC



Capacity	3 / 6 / 7.5 / 15 / 30 Kg
Division	0.2 / 1 / 0.5 / 1 / 2 g
Power	AC 100V ~240V (±10%) adapter + 18650 Lithium Ion battery
Display	LCD 6 / 6 / 6 digits ; 18mm (Height) LED backlight
Dimensions	300 x 110 x 330mm (W x H x D)
Operating Temperature	0°C ~ 40°C (32°F ~ 104°F)
Option	RS232 or Wi-Fi

SXC


BT


- Enclosed with indicator dust cover, rechargeable battery and power cord
- Easy to set any specification and up to 1/15,000 display resolution
- 15 levels sampling speed available
- Weight and quantity accumulation available
- Tare and pre-tare functions

Power	AC 100V ~240V (±10%) adapter + 18650 Lithium Ion battery
Display	LCD 6 / 6 / 6 digits ; 14mm (Height) LED backlight
Dimensions	256 x 170 x 90mm (W x H x D)
Operating Temperature	0°C ~ 40°C (32°F ~ 104°F)
Option	RS232 or Wi-Fi or Bluetooth

TXC


BT


- Up to 1/15,000 display resolution
- High speed 24bits AD; Display reading speed faster
- Auto calibration function
- Weight and quantity over-limit warning
- Low power and charging status indication

Power	AC 100V ~240V (±10%) adapter + 18650 Lithium Ion battery
Display	LCD 6 / 6 / 6 digits ; 14mm (Height) LED backlight
Dimensions	280 x 220 x 117mm (W x H x D)
Operating Temperature	0°C ~ 40°C (32°F ~ 104°F)
Option	RS232 or Wi-Fi or Bluetooth

FEATURES

- 1/3,000, 1/6,000, 1/15,000 up to 1/30,000 display resolution
- High speed 24bits AD; Display reading speed faster
- Faster weighing stability and zero return
- Zero key and Tare key reactfaster
- Option RS232 interface

RCH3



BT



Power	AC 110V / 230V (±10%) DC 6V / 4Ah rechargeable battery
Display	LCD 6 / 6 / 6 digits ; 14mm (Height) LED backlight
Dimensions	260 x 210 x 117mm (W x H x D)
Operating Temperature	0°C ~ 40°C (32°F ~ 104°F) Approval Model : -10°C ~ 40°C (14°F ~ 104°F)
Option	RS232 or Wi-Fi or Bluetooth

KCH3



BT



Power	AC 110V / 230V (±10%) DC 6V / 4.5Ah rechargeable battery
Display	LCD 6 / 6 / 6 digits ; 14mm (Height) LED backlight
Dimensions	245 x 195 x 156mm (W x H x D)
Operating Temperature	0°C ~ 40°C (32°F ~ 104°F) Approval Model : -10°C ~ 40°C (14°F ~ 104°F)
Option	RS232 or Wi-Fi or Bluetooth

TCH3 / TCH4



BT



(TCH3)

Approval Model : TCH3
Non-approval Model : TCH4

- 1/3,000, 1/6,000, 1/15,000 up to 1/30,000 display resolution
- High speed 24bits AD; Display reading speed faster
- Faster weighing stability and zero return
- Zero key and Tare key reactfaster
- Auto calibration function, OL protection

Power	TCH3 : AC 110V / 230V (±10%) DC 6V / 4Ah rechargeable battery TCH4 : AC 100 ~ 240V (±10%) DC 6V / 4Ah rechargeable battery
Display	LCD 6 / 6 / 6 digits ; 14mm (Height) LED backlight
Dimensions	280 x 220 x 117mm (W x H x D)
Operating Temperature	0°C ~ 40°C (32°F ~ 104°F) Approval Model : -10°C ~ 40°C (14°F ~ 104°F)
Option	RS232 or Wi-Fi or Bluetooth

SBH3-C / CQ2



BT



- Enclosed with indicator dust cover, rechargeable battery and power cord
- Easy to set any specification and up to 1/15,000 display resolution
- 15 levels sampling speed available

Power	AC 110V / 230V (±10%) DC 6V / 4Ah rechargeable battery
Display	LCD 6 / 6 / 6 digits ; 14mm (Height) LED backlight
Dimensions	176× 156× 164mm (W x H x D)
Operating Temperature	0°C ~ 40°C (32°F ~ 104°F) Approval Model : -10°C ~ 40°C (14°F ~ 104°F)
Option	RS232 or Wi-Fi or Bluetooth

LKCH3 / LKCH4**BT**

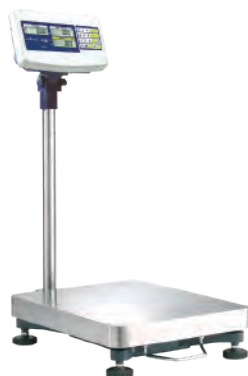
- 1/3,000, 1/6,000, 1/15,000 up to 1/30,000 display resolution
- Digital calibration
- Faster weighing stability and zero return
- Zero key and Tare key react faster

Power	KCH3 : AC 110V / 230V (±10%) DC 6V / 4Ah rechargeable battery KCH4 : AC 100V ~ 240V (±10%) DC 6V / 4Ah rechargeable battery
Display	LCD 6 / 6 / 6 digits ; 14mm (Height) LED backlight
Platter Size	460 x 600mm
Dimensions	245 x 195 x 156mm (W x H x D)
Operating Temperature	0°C ~ 40°C (32°F ~ 104°F) OIML Approval Model (KCH3): -10°C ~ 40°C (14°F ~ 104°F)
Option	RS232 or Wi-Fi or Bluetooth

LTCH3 / LTCH4**BT**

- 1/3,000, 1/6,000, 1/15,000 up to 1/30,000 display resolution
- High speed 24bits AD ; Display reading speed faster
- Faster weighing stability
- Faster zero return
- Zero key and Tare key react faster
- Auto calibration function, OL protection

Power	TCH3 : AC 110V / 230V (±10%) DC 6V / 4Ah rechargeable battery TCH4 : AC 100V ~ 240V (±10%) DC 6V / 4Ah rechargeable battery
Display	LCD 6 / 6 / 6 digits ; 14mm (Height) LED backlight
Platter Size	460 x 600mm
Dimensions	280 x 220 x 117mm (W x H x D)
Operating Temperature	0°C ~ 40°C (32°F ~ 104°F) OIML Approval Model (TCH3): -10°C ~ 40°C (14°F ~ 104°F)
Option	RS232 or Wi-Fi or Bluetooth

DSBH3-C**BT**

- Enclosed with indicator dust cover, rechargeable battery and power cord
- Easy to set any specification and up to 1/15,000 display resolution
- 15 levels sampling speed available

Power	AC 110V / 230V (±10%) DC 6V / 4Ah rechargeable battery
Display	LCD 6 / 6 / 6 digits ; 14mm (Height) LED backlight
Platter Size	460 x 600mm
Dimensions	176× 156× 164mm (W x H x D)
Operating Temperature	0°C ~ 40°C (32°F ~ 104°F) Approval Model: -10°C ~ 40°C (14°F ~ 104°F)
Option	RS232 or Wi-Fi or Bluetooth

BATCH WEIGHING CONTROLLER



320S High Performance

Batch Weighing Controller

FEATURES

- Large 6-digit LED Display (21mm high)
- Highspeed A/D Conversion of 360 times/second
- Built-in RS-232 and RS-485 Interfaces
- Support Modbus over TCP/IP and Modbus RTU over TCP/IP
- External USB Data Log
- Easy Setting and Update Via Web Browser
- EN 61010-1:2010/A1 and EN61326-1 Industrial Environment



OVERVIEW

320S is a powerful model specially designed for weight control. It has a small size and a large screen, which is convenient to store in the control machine or inlay on the control panel without taking up space.

The A/D conversion rate is increased by up to 360 times per second, and supports firmware update through web browser. The webpage can control the specification setting, which improves the operation efficiency and is more intuitive.

You can use Onboard RS-232 and RS-485 to communicate with different devices at the same time. USB data log is more convenient for data management and storage.

The LED character height is 21mm, and the red and green design suits various usage environments.

Industrial-grade high anti-interference ability, the cabinet has a sturdy matte brushed texture.

SPECIFICATIONS

Analog

Load cell excitation	DC 5V \pm 5%, 120 mA 【8x350 Ω load cells sensor】
Max.load cell input voltage	0 ~ 4.0 mV/V
Input sensitivity	0.2 μ V/D
A/D resolution	360 times/second

Digital

Display	6 digits red or green LED, 21mm, 7-segment
Decimal point position	Selectable 0, 0.0, 0.00, 0.000
Display frequency	Optional: unlimited /20/10/5/1 times/second
Number of digits	-199999 to 999999
Minor division	1, 2, 5, 10, 20, 50
Status display	4 selectable status: Zero, MD, Gross, Net, Accu.V, Accu.C, SP1, SP2, SP3, Hi, OK, Lo, Under, Over, Unloading, Running, Hold
Button	ON/OFF, Zero, Tare, F1, F, Enter

General

Power source voltage	AC 90 ~ 240V 50 / 60Hz	
Power consumption	About 10 VA	
Operating temperature	0°C~ 40°C	
Operating humidity	< 85% RH	
Safety regulations	EN 61010-1:2010/A1 (Low Voltage Directive)	EN61326-1 (EMC Directive) Industrial Environment

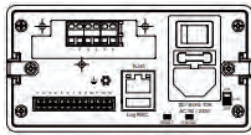
Other

Memory content	Calibration data, Function data Other settings (EEPROM)
Calibration data protection	Calibration data and related settings protection function, can not be changed arbitrarily

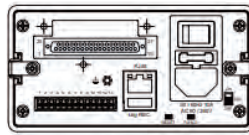
Interface

RS-485	Terminal block; support Modbus RTU
RS-232	Terminal block
USB 2.0 Type A	Support USB data log and time setting
RJ-45	10/100Mbps; support LAN web browser for system settings and firmware updates; support Modbus RTU over TCP/IP

OPTIONS

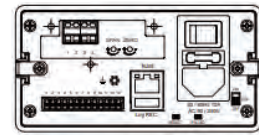


OP-01:
RS-422 / RS-485 / RS-232 serial interface

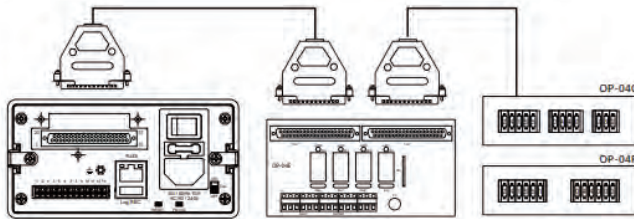


OP-02-1:
BCD Parallel output interface (Open Collector)

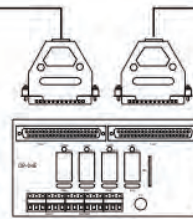
OP-02-2:
BCD Parallel output interface (TTL)



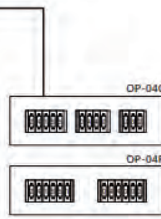
OP-02-3:
Analog output interface (4 ~ 20mA, 0~ 10V)



OP-04:
Control I/O (4 In / 4 Out) +
Setpoint Input (BCD Code)

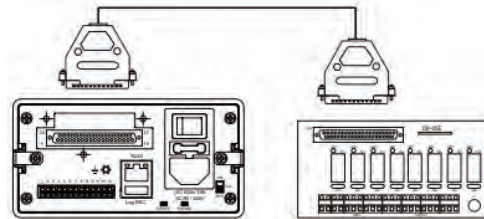


OP-04E:
Relay Output (4 In / 4 Out)

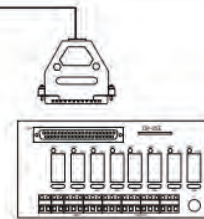


OP-04C:
HI, LO input interface

OP-04F:
Setpoint input interface

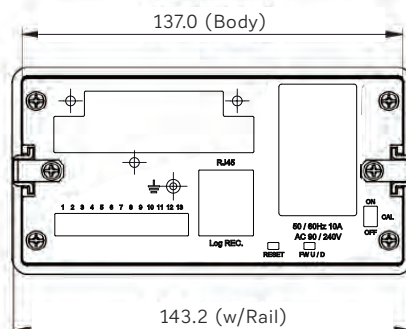
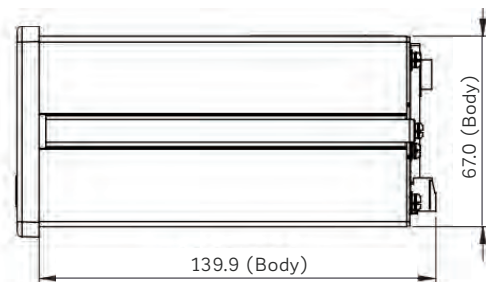
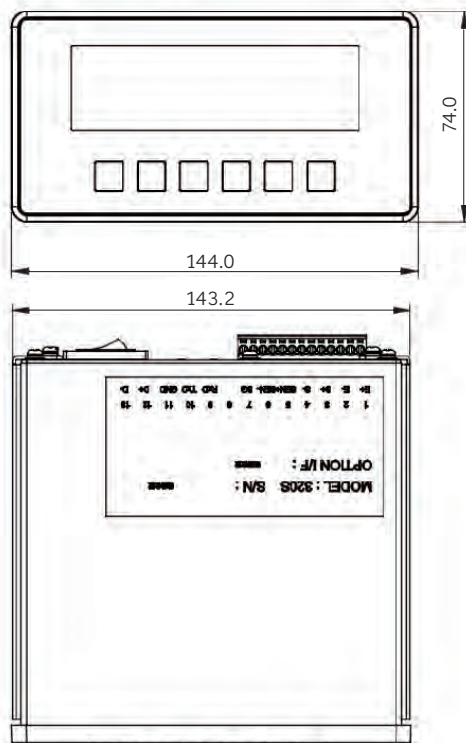


OP-05:
Control I/O (8 In / 8 Out)



OP-05E:
Relay Output (8 In / 8 Out)

DIMENSION



EX-2001 NC Rancer



- Large LED display (7 digit, height 20mm)
- High speed A/D conversion with powerful digital processing; input sensitivity $0.3 \mu\text{V/D}$; update rate 120 times/second
- Maximum load cell input voltage: -1~ 20mV

Power	AC 100V ~ 240V 50 / 60Hz
Display	LED 7 digits ; 20.3mm (Height)
Dimensions	210 x 108 x 207mm (W x H x D)
Operating Temperature	0°C ~ 40°C (32°F ~ 104°F)

OP-01 : RS-422/RS-485
 OP-02 : Parallel BCD output (TTL / O.C)
 OP-03 : Analog output
 OP-05 : Parallel printer output
 OP-05F : Freeform printer interface
 OP-06 : RS-232 (in/out) / Current loop
 OP-07 : RS-232 (in/out) / Current loop / Data clock
 OP-08 : Control I/O (2 Input / 4 Relay Output)

120S



- Stand alone batching mode or connect to PLC for external system control
- Built-in MODBUS RTU format easily connect with any human machine interface and PLC
- Built-in full duplex RS232C interface or RS-485 serial interface

Power	AC 100V ~ 240V ($\pm 10\%$)
Display	LED 6 digits ; 16mm (Height)
Dimensions	96 x 48 x 140mm (W x H x D)
Operating Temperature	0°C ~ 40°C (32°F ~ 104°F)

OP-02-2 : BCD parallel output interface (TTL output)
 OP-03 : 16 Bit Analogue current (0 ~ 20 mA) / voltage (0~10V) output interface
 OP-04E : Relay Output (4 In / 4 Out)
 OP-04C : Hi, Lo, OK input interface (BCD code)
 OP-04F : Setpoint input interface (BCD code)
 OP-05 : Control I/O (8 In / 8 Out)
 OP-05E : Relay Output (8 In / 8 Out)

150S



- DC power supply: with DC12V~24V power supply design for the application of flame-proof system
- Built-in MODBUS RTU format easily connect with any human machine interface and PLC
- Built-in full duplex RS232C interface or RS-485 serial interface

Power	DC 12V ~ 24V
Display	LED 6 digits ; 16mm (Height)
Dimensions	96 x 48 x 140mm (W x H x D)
Operating Temperature	0°C ~ 40°C (32°F ~ 104°F)

OP-02-2 : BCD parallel output interface (TTL output)
 OP-03 : 16 Bit Analogue current (0 ~ 20 mA) / voltage (0~10V) output interface
 OP-04E : Relay Output (4 In / 4 Out)
 OP-04C : Hi, Lo, OK input interface (BCD code)
 OP-04F : Setpoint input interface (BCD code)
 OP-05 : Control I/O (8 In / 8 Out)
 OP-05E : Relay Output (8 In / 8 Out)

PLATFORM





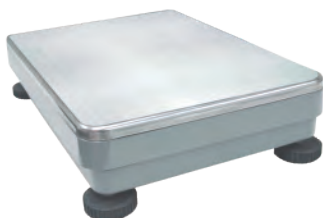
PLATFORM

— Compatible with all EXCELL Indicators —

*Experience the Perfect Balance of
Strength and Precision*



Aluminum Die-Casting Base Platform (Optional Casters)

M


Capacity 75 / 150 / 300 Kg

Platter Size 375 x 520mm

D


Capacity 75 / 150 / 300 Kg

Platter Size 420 x 520mm

L


Capacity 75 / 150 / 300 / 600 Kg

Platter Size 460 x 600mm

FEATURES

- ABS housing and TYPE 304 stainless steel platter
- Drainage channel design underneath the platter to prevent water running into the platform
- X Shape Aluminum Supports
- Reinforced engineering structure design

J

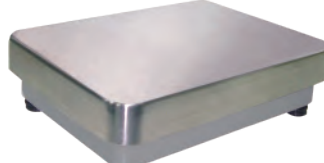

Capacity 6 ~ 75 Kg

Platter Size 334 x 254mm

K


Capacity 15 ~ 75 Kg

Platter Size 322 x 242mm

T


Capacity 30 ~ 150 Kg

Platter Size 400 x 300mm

V


Capacity 30 ~ 150 Kg

Platter Size 370 x 271mm

Welded Mild Steel Construction

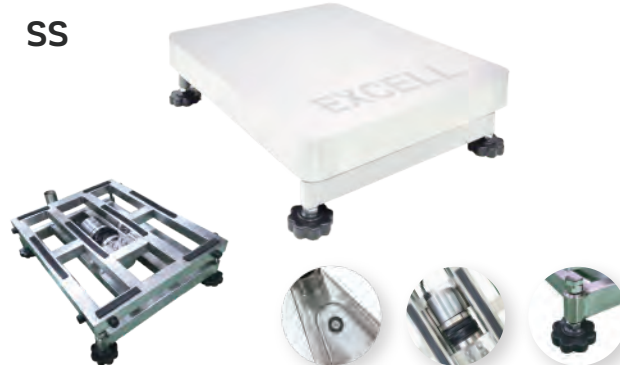
P


- Stainless Steel Top 1.5mm thick
- Welded Mild Steel 1.4mm Thick
- Bubble Level For Accurate Measurement
- Bottom Cover Plate Prevent Water Splash Onto Load Cell
- Sturdy Screw Posts For Rubber Feet Avoid Thread Stripping

Capacity 75 / 150 / 300 Kg

Platter Size 420 x 520mm

Stainless Steel Construction

SS


- Stainless Steel Top 1.5mm Thick
- Stainless Steel 1.2mm Thick
- Bubble Level For Accurate Measurement
- Waterproof Kit Prevents Water From Splashing Into the Load Cell
- Sturdy Screw Posts For Rubber Feet Avoid Thread Stripping

Capacity 75 / 150 / 300 Kg

Platter Size 400 x 500mm

INDUSTRIAL SCALE



FEATURES

- Easy operation and rugged aluminum alloy housing
- Overloading safety up to 400%
- 360 rotatable crane hook with excellent stability and safety design
- Rechargeable battery easily replacement design
- Hold function
- Full range tare, Auto zero tracking, Gross/Net Indication
- Low power indication and auto power off for longer operation time
- Remote control included with control distance up to 30m

GJW-4E Crane Scale



- Manual/ Auto / Peak weight hold function, Set point control function
- Selectable units "kg", "lb" and "t"
- Easy reading with high brightness LED

Capacity	30 / 60 / 100 / 200 / 300 / 600 / 1000kg
Power	AC 100V ~ 240V (±10%) adapter + DC 6V / 7Ah rechargeable battery
Display	LED 5 digits ; 26mm (Height)
Dimensions	30~100kg : 160 × 232 × 174 mm 200~1T : 160 × 325 × 174 mm
Operating Temperature	-10°C ~ 40°C (14°F ~ 104°F) (Approval)

GJW-7C Crane Scale



- Pre-tare function
- Check weighing with Lo/ Hi/ OK
- Selectable units "g", "kg", "lb", "t" and "pcs"
- Simple counting function
- LCD display with LED backlight

Capacity	30 / 60 / 100 / 200 / 300 / 600 / 1000kg
Power	AC 100V ~ 240V (±10%) adapter + DC 6V / 7Ah rechargeable battery
Display	LED 5 digits ; 26mm (Height); LED backlight
Dimensions	30~100kg : 160 × 232 × 174 mm 200~1T : 160 × 325 × 174 mm
Operating Temperature	-10°C ~ 40°C (14°F ~ 104°F) (Approval)

HJW

Simple Weighing Hanging Scale



- Up to 1/6,000 display resolution
- Hold function, Check weighing with Lo / Hi / OK
- Simple counting function
- Full range tare, Pre-tare, Auto zero tracking
- Gross/Net Indication
- Selectable unit mode
- Low power indication and auto power off
- LCD display with LED backlight

Capacity	6 / 15 / 30 / 60 / 100 kg
Power	AC 100V ~ 240V (±10%) adapter (Standard) + DC 6V / 7Ah rechargeable battery (Option)
Display	LCD display : 128 x 40mm ; 6 digits ; 28mm (Height) ; LED backlight
Dimensions	195 × 243 × 86 mm
Operating Temperature	-10°C ~ 40°C (14°F ~ 104°F) (Approval)
Weight of the scale	Around 3kg
Option	Hanging tray set (for 6~30kg) DC 6V/7Ah rechargeable battery Second display

HJP

Pricing Crane Scale



- Up to 1/6,000 display resolution
- High speed 24bits A/D converter
- Fast weighing stabilization and zero return
- 21-key control keypad
- Two control modes(Wired/Wireless)
- Digital calibration
- Vendor and customer sides display
- 6 digits LCD display with LED backlight
- Low power and charging status indication
- Battery Life: 170~260 hrs
- DC 6V/7Ah rechargeable battery

Capacity	6 / 15 / 30 / 60 / 100 kg
Power	AC 100V ~ 240V (±10%) adapter (Standard) + DC 6V / 7Ah rechargeable battery (Option)
Display	LCD display : 71 x 22mm ; 6 , 6 , 6 digits ; 17mm (Height) ; LED backlight
Dimensions	195 × 330 × 86 mm
Operating Temperature	-10°C ~ 40°C (14°F ~ 104°F) (Approval)
Weight of the scale	Around 3kg
Option	Hanging tray set (for 6~30kg) Carabiner

FJ5

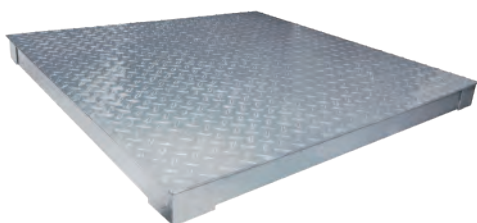
Waterproof Crane Scale



Capacity	1 / 1.5 / 2 / 3 / 5 / 7.5 / 10 / 15 T
Division	0.5 / 0.5 / 1 / 1 / 2 / 5 / 5 / 5 Kg
Power	AC 100V ~ 240V (±10%) + DC 6V / 10Ah rechargeable battery
Display	LED 5 digits ; 25.4mm (Height)
Dimensions	1T ~ 3T : 210 x 218 x 665mm 5T : 210 x 278 x 753mm 7.5T : 210 x 278 x 890mm 10T ~ 15T : 210 x 438 x 945mm
Operating Temperature	-10°C ~ 40°C (14°F ~ 104°F) (Approval)
Options	Sun visor Wireless remote control / display

- Meets the IK10 impact resistance rating and IP66 waterproof rating
- 360° rotatable crane hook design (for 1T ~ 3T models)
- Overload Safety Factor :
Up to 600% for 1T ~ 5T; up to 350% for 7.5T ~ 15T or more
- Standard model comes with RF remote controller* (up to 30m range) option with bluetooth handset

Floor Scale



- Capacity : 1T ~ 4T (1/3000 display resolution)
- Freestanding model with 4 adjustable feet
- Widely used for weighing goods and small vehicles in factories enterprises, railways and harbors etc.
- 4 load cells are included
- Load cells can be replaced individually
- Connectable to any weighing indicators and printer interface or RS232 serial data output

Option :

- Ramp
F-T-1010 : 1.0 x 1.0m
F-T-1212 : 1.2 x 1.2m
F-T-1515 : 1.5 x 1.5m

GoW Wireless Platform GoW + (TM transmitter + platform)

- There is no weight data output function for GoW
- GoW without RS232 function
- It can not use USB Bluetooth Dongle anymore

QoW Wireless Platform QoW + (TM transmitter + platform)

- There is no weight data output function for QoW
- QoW without RS232 function
- It can not use USB Bluetooth Dongle anymore

GW Bluetooth Indicator GW Bluetooth indicator

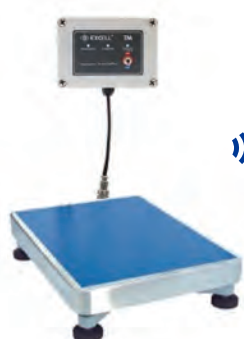
- GW without RS232 function
- 2 options for Bluetooth connection
 - A. offer Bluetooth profile to customer for developing
 - B. use USB Bluetooth Dongle to connect with PC
- Bluetooth output is in continuous transmission weight format

BLE4.0 for computer uses windows 10 operating system or newer version or Android with BLE4.0 device.

QW Bluetooth Indicator QW Bluetooth indicator

- QW without RS232 function
- 2 options for Bluetooth connection
 - A. offer Bluetooth profile to customer for developing
 - B. use USB Bluetooth Dongle to connect with PC
- Bluetooth output is in continuous transmission weight format

BLE4.0 for computer uses windows 10 operating system or newer version or Android with BLE4.0 device.

TM Transmitter TM transmitter + platform

A BLE4.0
Computer



B USB

- 2 options for Bluetooth connection
A. offer Bluetooth profile to customer for developing
B. use USB Bluetooth Dongle to connect with PC
- Bluetooth output is in continuous transmission weight format

BLE4.0 computer is use windows 10 operating system or newer version or Android with BLE4.0 device.

Bluetooth Scale

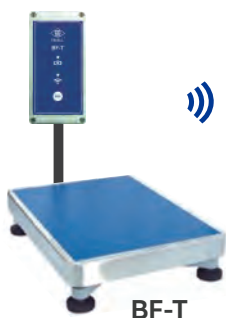
A BLE4.0
Computer



B USB

- Table scale without RS232 function
- 2 options for Bluetooth connection
A. offer Bluetooth profile to customer for developing
B. use USB Bluetooth Dongle to connect with PC
- Bluetooth output is in continuous transmission weight format

BLE4.0 for computer uses windows 10 operating system or newer version or Android with BLE4.0 device.

BF-T BF-R Wireless Platform

BF-R

BF-T

- Can not use USB Bluetooth Dongle
- RS232 output mode of BF-R is transmitted by key

FJ5 Bluetooth Crane Scale

A



B BLE4.0
Computer



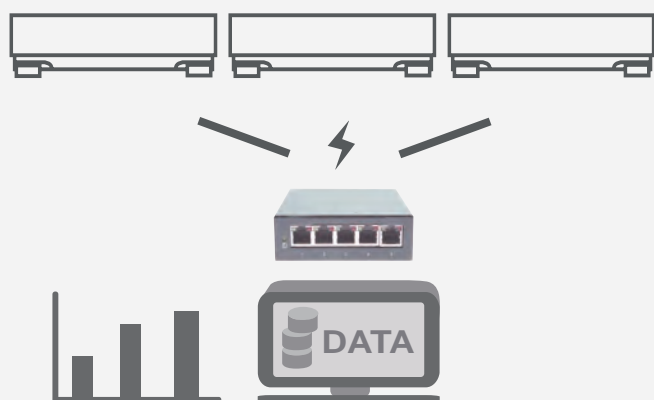
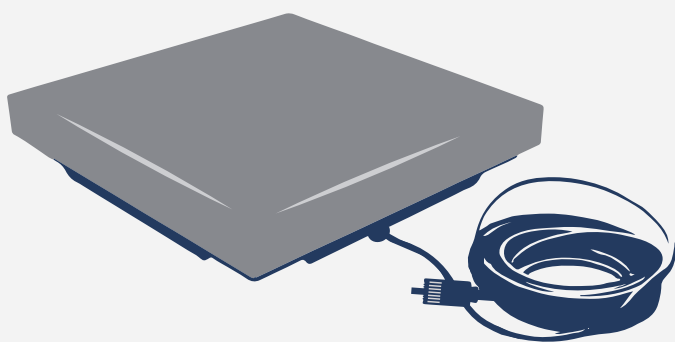
C USB

- 3 options for Bluetooth connection
A. offer Bluetooth profile to customer for developing
B. Once the mobile device is connected, it cannot be connected to a computer or USB Bluetooth Dongle
C. use USB Bluetooth Dongle to connect with PC
- Bluetooth output is in continuous transmission FJ5 weight format

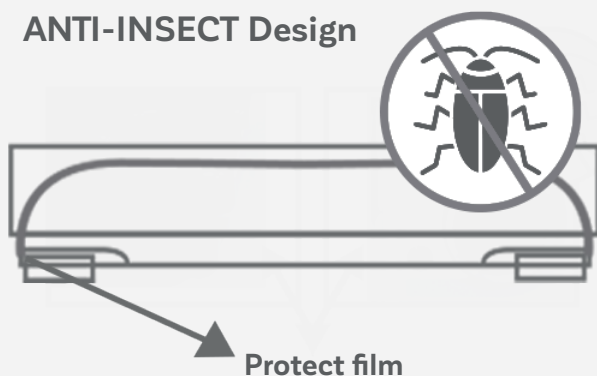
BLE4.0 for computer uses windows 10 operating system or newer version or Android with BLE4.0 device.

EXZ PoE Ethernet Scale

Configurable for Industrial Applications



ANTI-INSECT Design



FEATURES

- Power-over-Ethernet (PoE) Interface
- Connect Scale to Local Area (LAN) Network
- Real-Time Weighing Data Measurement
- Powerful Weighing Data Management
- Robust and Reliable Design for Harsh and Hygienic Environments
- AISI 430 Stainless Steel
- IP54 Waterproof
- Anti-Insect Design
- Easy cleaning and Hygienic Design

PRODUCT DESCRIPTION

Excell EXZ PoE Ethernet Scale is designed to be connected to any Local Area Network (LAN), an ideal solution to send scale data over the internet into a database system. Data from scales in many different locations could all report to the same database. This would allow central offices to use this data for a variety of purposes.

With its AISI 430 stainless steel housing with IP54 Waterproof and Anti-Insect design, EXZ PoE Ethernet Scale can be used in harsh and hygienic industrial environments.

A special protocol allows communication to be established with the central web server without any user intervention. EXZ PoE Ethernet Scale is the ideal solution for weighing process at all industries, especially when you need to keep tracking of weighing data in real-time on a daily, hourly, or even more frequent basis if necessary.

Capacity	60 Kg x 0.05 Kg
Dimension	300 x 300 x 65 (W x D x H)
Enclosure	AISI 430 Stainless Steel
IP Protection	IP 54
Operating Temperature	0°C ~ 50°C
Humidity	5 ~ 90% @40°C, Non-Condensing
Interface	Power over Ethernet (IEEE802.3)

SCALE ACCESSORIES

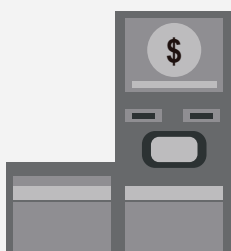


EXK Weighing Pal

You Scale Development & Integration Kit



APPLICATION



Checkout Scale



Self-service Scale



Dimensioning Scale

FEATURES

- One micro-USB port for both power and data communications
- USB driver OS support:
 - Windows XP/2K/Server 2003/Vista/7/8/8.1/10
 - WinCE 5.0/6.0
 - Mac OSX
 - Linux 2.6.x/3.x.x and 4.x.x • Android 4.2
- 2 COM ports via USB interface
(separate COM ports for weighing data and commands)
- Supports 3 types of data: weighing, counting, internal value
- Supports 4 weighing functions: Tare, pre-tare, zero, and zero tracking
- Connects to any weighing platform with 5-pin Aviation platform connector
- Compact size: 12 x 6 x 3 cm (excluding platform cable and connector)
- Easy to use with Weighing Kit WKT software (compatible with XP(SP3)/Win7/8/10)

Resolution	Up to 1/15000 (determined by platform load cell's resolution) Supports dual-interval resolutions
Units	Kg / g / lb / oz / carat / T
Dimensions	120 x 60 x 30mm (excluding 5-pin platform connector & cable)
Weight	117 g (including 5-pin platform connector & cable)
Power source	5V 500mA (Micro-USB bus-powered)

BLE Dongle

USB Bluetooth BLE Adapter



Power Supply	DC 5V (USB-powered)
Dimensions	70 x 26 x 12mm
Connector	USB Type-A male
Transmission Power	-6 to 4 dBm
USB Specification	Supports USB 2.0 VCP
Dongle Setup	Via direct commands or FernLand BLE Tool

- Connects your Scale-IoT® scale(s) to your computer wireless via Bluetooth connection
- Supports Bluetooth Specification V4.0 (BLE) or above
- Easy-to-carry compact size
- Baud Rate: 1200 ~ 921.6Kbps (N.8.1) (Auto BaudRate)
- Standard USB Connector
- Dongle can be set up by communication tools using commands or by using FernLand BLE Tool

TM

Wireless Transmitter For Scale Platform



Bluetooth	4.0 BLE
Dimensions	130 x 94 x 58mm
Resolution	1/3000 ~ 1/15000 depending on the quality of the loadcell
Power supply	AC 100V ~ 240V (±10%) DC12VAdaptor or DC 3.7V / 1500mAh lithium battery

- Through Bluetooth transmitting weighing data, range up to 20M
- Work with any platform with 5-pin Aviation plug Continuous use for 70 hours or standby for 1600 hours
- Easy setup with APP ScaleConfig
- External antenna can extend the range up to 60M (option)

WiFi Module

UART-to-WiFi Module



Communication Specification	UART
Setup / Management	Web-based
WiFi Work Mode	AP and/or STA mode(s)
UART Baud Rate	1200 to 460800 bps
Transmission Modes	TCP/UDP server/client
Dimensions	72 x 47 x 10mm (excluding antenna)

- Add Wi-Fi connection to your compatible EXCELL scale
- Incorporate Scale-IoT® to your compatible EXCELL scale
- Web-based setup and management
- Wi-Fi operates in AP and/or STA modes (password protection can be used)
- UART communication specification

J4

Surge Protector



Dimensions	177 x 86 x 38mm
Load Cell Resistance	350 ohms
Ports and Connectors	4 x load cell connector (PA66 gland) 1 x indicator connector (PA66 gland)

- IP68 waterproof with aluminum cases and nylon PA66 clamping glands
- 2 to 4 load cell inputs
- Accept cables from 3.5mm to 7.0mm in diameter
- Clamping gland torque 15 kg-cm or 1.5 N-m

J4-S

Stainless Steel Junction Box



Dimensions	145 x 100 x 36.7mm
Load Cell Resistance	350 ohms
Ports and Connectors	4 x load cell connector (PA66 gland) 1 x indicator connector (PA66 gland) 1 x pressure relief valve

- IP68 waterproof with stainless steel cases and nylon PA66 clamping glands
- 2 to 4 load cell inputs
- Accept cables from 3.5mm to 7.0mm in diameter
- Clamping gland torque 15 kg-cm or 1.5 N-m

J8-P Surge

Surge Protector



Dimensions	237 x 291 x 100mm
Load Cell Resistance	350 ohms
Ports and Connectors	8 x load cell connector (PA66 gland) 1 x indicator connector (PA66 gland) 1 x expansion connector (PA66 gland) 1 x ground connector 1 x pressure relief valve

- IP66 waterproof with PC cases (flame class: HB) and nylon PA66 clamping glands
- Surge & lightning protection
- 8 load cell inputs

SP-151

Surge Protector



Dimensions	130 x 130 x 102mm
------------	-------------------

Maximum Surge Current	10KA @ 8 /20 μ S
-----------------------	----------------------

Leakage Current	10 μ A@ 32V dc
-----------------	--------------------

Limiting Voltage	80V @ 6kV/3kA
------------------	---------------

Connections	6 wires + screen + earth
-------------	--------------------------

- IP65 waterproof
- Protects load cells, weighbridges, process weighing and silos
- Reliable, high surge absorption capacity
- Easy field installation in rugged weatherproof enclosure
- Can be used in intrinsically safe circuits without further certification

RS232 Formater

Function Box



Power	5V 1A
-------	-------

Dimensions	91.3 x 110 x 44.8mm
------------	---------------------

Weight of the Converter	Around 225 g
-------------------------	--------------

Setting Port	Micro USB
--------------	-----------

Windows OS	XP SP3 and above
------------	------------------

- Reconfigure/rearrange any RS-232 Data at your fingertips
- Use Function Box Config Tool (FBCT) to setup printing format/label with any programmable printer

BLE LED Display

Surge Protector

BT



Power	AC 100V ~ 240V
-------	----------------

Display	6 digits BLE LED Display
---------	--------------------------

Dimensions	3": 430 x 180 x 50mm
	5": 670 x 270 x 58mm
	8": 900 x 320 x 78mm

- Easy to install, simple to operate, use APP to configure
- 6-digit 7-segment high brightness LED display
- Wireless range is up to 70m
- With broadcasting function, multiple BLE LED displays can simultaneously display the weight measurement of the selected Bluetooth crane





HERITAGE MELTS WITH NEW INNOVATION ENDLESS

HI-TECH METROLOGY · SCALE-IOT® · SCALE-FACTORY®
IP68 IP69 WATERPROOF · WIRELESS CHARGING



+886-2-8919-1000



www.excell-scale.com



pm-all@excell.com.tw



6F, No. 127, Lane 235, Baoqiao Road,
Xindian District, New Taipei City,
23145, Taiwan

